



사람을 귀하게 여기는 대학



Human Network connecting
people with people



www.chosun.ac.kr 309, Pilmun-daero, Dong-gu, Gwangju, 61452 Korea TEL +82-62-230-7114 FAX +82-62-232-8834

GREAT CHOSUN HUMAN UNIVERSITY CHOSUN UNIVERSITY 2019 BROCHURE

GREAT CHOSUN HUMAN UNIVERSITY

CHOSUN UNIVERSITY
2019 BROCHURE





CHOSUN UNIVERSITY
2019 BROCHURE
CONTENTS

GREAT CHANGE • Change towards the Second Foundation

04 The Power of a Foundation of 72,000 06 Succession of History and Tradition 08 University Renaissance 10 The 365 Plan 12 Design the Future

GREAT SPIRIT • A Century of Foundation

14 Greetings 16 CU FIRST 72,000 18 CU AGAIN 72,000 20 Century Vision

GREAT PROSPERITY • Capabilities and Performance

24 Global HRD 26 R&D Systemization 28 Economic Strength 30 Attractive Story Creation 32 Thinking Collaboration

GREAT NURTURE • University Introduction

36 College of Humanities	38 College of Natural Sciences	40 College of Law	42 College of Social Sciences	44 College of Business
46 College of Engineering	48 College of IT Convergence	50 College of Education	52 College of Foreign Studies	54 College of Physical Education
56 College & Graduate School of Medicine	58 College & Graduate School of Dentistry	60 College of Pharmacy	62 College of Art and Design	
64 College of General Education	66 College of Health Sciences	68 College of Future Society Convergence	70 Graduate Schools	

GREAT FACILITIES • Life and Environment

74 SOCIETY in CHOSUN 76 LIFE in CHOSUN 78 NETWORK in CHOSUN 80 CAMPUS MAP

GREAT CHOSUN HUMAN UNIVERSITY

Human Network connecting people with people

Chosun University was founded in 1946 based on the aspiration of its 72,000 founders. It has endured times of turbulence and built 70 years of history. Now it is taking a leap towards completing its first of many centuries. As the conviction of our founders has allowed us to grow, we now aim for a full blossoming based on the strength of our 72,000 founders. We will accomplish change for the future through a human network that is warm at 36.5 C, 365 days a year.

THE POWER OF A FOUNDATION OF 72,000

Chosun University is Korea's first private university, built on the philosophy of 72,000 people.

In April, 1946, after Korea's liberation, the Chosun College Founders' Association was established with the aim of reconstructing the liberated nation. The public, ranging from governors, town chiefs, "gisaeng" and farmhands all participated voluntarily by purchasing a founding membership. At the time, membership cost 100 KRW which was enough to buy 40kg of rice. Local farmers and day laborers of limited means also contributed towards this noble endeavor of reconstructing the nation through education by donating some of their harvests of sesame seeds, laver, seaweed and other necessities. Then, based on the willpower of the 72,000 Founders' Association members, Chosun University, Korea's first private university, and Honam region's first private school, was founded in 1946.

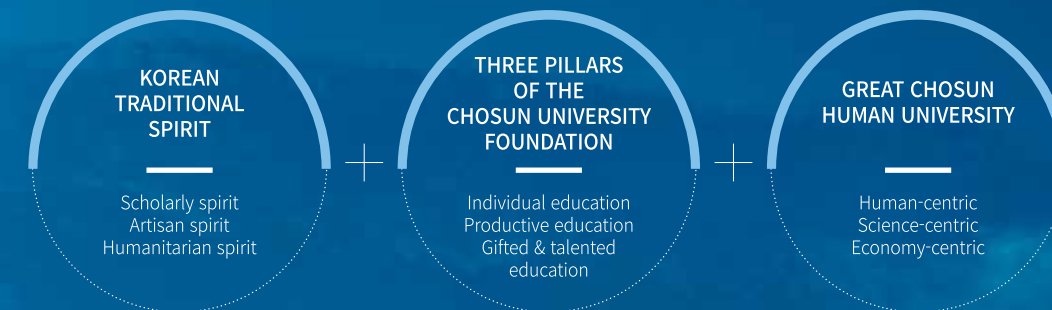
— We must educate our people to reconstruct our national culture even though we build walls with clay, doors with paper, houses from barns, whatever it takes. In this era of confusion and need, we shall overcome all difficulties and establish the world's most advanced educational institution. We will develop thousands of national leaders who will relieve us from such hardships and poverty. Please join our efforts and become a member of the Chosun College Founders' Association.

—
From the Chosun College Founders' Association Membership Invitation Letter

GREAT CHOSUN HUMAN UNIVERSITY

Chosun University will advance the history and tradition of education in Honam region

During the last 70 years, it has not only been the educational history and traditional culture that Chosun University has been advancing. The educational philosophy of the 72,000 Founder's Association members to build Korea's first private university was developed from the 5,000 years of Korean history.



BRIDGE LEADERSHIP

Lighting up a University Renaissance based on 73 years of history

The 73 year history of Chosun University, the first private university in Korea, will advance towards completing its first century based on its CU Again 72,000 foundation. Chosun University was built for the nation and its people, and will realize a university renaissance that will lead the 4th Industrial Revolution, focusing on great history and humanism.

VISION 2030

GREAT
CHOSUN
HUMAN
UNIVERSITY



MISSION

Science Bridge
Human Bridge
Economy Bridge



MANAGEMENT PHILOSOPHY

D Data management
E Empowering management
S Service management
I Insight management
G Global management
N Network management



EXECUTION STRATEGY

G Global HRD
R R&D Systemization
E Economic Strength
A Attractive Story Creation
T Thinking Collaboration

THE 365 PLAN

— 36.5°C, 365 DAYS

Virtuous change with the warmth of 36.5°C to benefit all of humanity

The founding philosophy of Chosun University is humanitarianism, which is our nation's founding principle. After a history of 73 years, it has developed into "humanism." 36.5°C is the human body temperature. Based on such warm humanism, Chosun University will do its best to create "a happy university where people are treasured and respected 365 days a year."

GREAT CHOSUN

An education model that
realizes the Korean people's
great history of 5,000 years

HUMAN UNIVERSITY

A value-centric
university where humans
are treasured

THE 365 PLAN

Warm humanism
at 36.5°C,
365 days a year

CU AGAIN 72,000

The spirit of approximately 72,000 Founders' Association members will advance towards building a history of a hundred years

Chosun University was established in 1946 after the Korean liberation thanks to the 72,000 Founders' Association members who were united in their aspiration to build Korea's first private university. Today, Chosun University is carrying forward the 'CU Again 72,000' project, which succeeds the noble will of the 72,000 Founders' Association members. The first century of foundation will be based on the participation of members from the university, alumni and the local community, raising the status and competence of Chosun University as a prestigious educational institution.

Dec. 1. 1946.

Chosun College
Founders' Association
Membership Invitation
publicized and
fundraising

Dec. 3. 1947.

72,000 members
recruited from
the Founders'
Association

Dec. 1. 2016.

CU Again 72,000
project declared

Dec. 31. 2017.

CU Again 72,000
Performance sharing



●
Greetings

Great Chosun Human University. Taking A Leap Forward Through 36.5°C Humanism

Chosun University was Korea's first private university built on the philosophy of its 72,000 founding members.

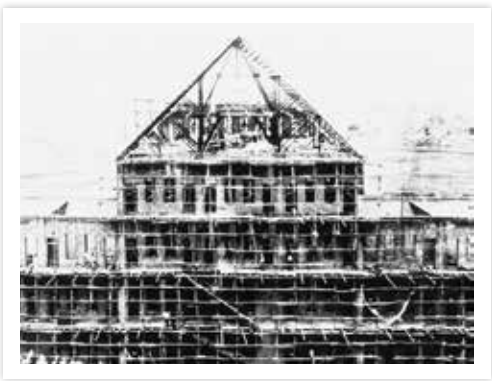
Chosun University is currently Honam's most prestigious educational institution, based on its noble founding principle to reconstruct the nation through developing people of talent. Through the "365 Plan", we aim at further advancing Chosun University as the "Great Chosun Human University" where people are respected, invited, and happily engaged in education, research, public service, administration, and learning 365 days a year.

With a history of 73 years, Chosun University is now looking forward to the future, beginning its journey towards completing its first century of foundation. Through the 'CU Again 72,000' project, Chosun University aims to repay the support that the local community has shown for the school's development into the most prestigious institution, and will take a leap forward to become a globally leading university.

The 'CU Again 72,000 Project' aims to create a university development fund which is symbolic of the 72,000 members of the Founders' Association, and to create a human network with supporters of our university. We will prepare for the centennial anniversary of Chosun University's foundation with the same spirit of the Founders' Association, which led to the establishment of Korea's first private university. We will foster young leaders to prepare for the 4th Industrial Revolution in the field of science, and the reunification of North and South Korea in national history. We will lead the Asian Renaissance through science and technology based on the virtues that value people, the humanities, and the social sciences.

Establishing the first foundational century from an introspection of 73 years of history

Chosun University has done its part to advance the spirit of the Korean people, and has established a base to successfully reach its first foundational century through the accomplishments it has achieved during its first 73 years of history. Chosun University, Korea’s first private university was built on the aspirations of its 72,000 founding members. Throughout its history of 73 years, Chosun University has always taken the upright path in a righteous manner.



Background - Main Building and Affiliated Middle School (left),
Affiliated High School (right)

1946~

- May. 16. 1946 Organizing committee formed to establish the Chosun College Founders’ Association
- Aug. 1946 Chosun College Founders’ Association formally established (Gwangjuseo Middle School auditorium)
- Sep. 29. 1946 Formal opening of the Gwangju Evening Academy (4 divisions, 12 departments, 1,194 students)
- Nov. 23. 1946 Gwangju Evening Academy changed to Chosun Academy
- Dec. 1. 1946 The Founders’ Association announced a university prospectus for membership invitation; fundraising activities commenced
- Dec. 15. 1947 Applications submitted for the founding of Chosun College and accreditation for its curriculums
- Dec. 31. 1947 72,000 members enlisted in the Founders’ Association
- Jan. 23. 1948 Student fundraising activities commenced in the city of Mokpo and surrounding districts of Muan
- May. 25. 1948 Chosun Academy approved as Chosun College (4-year curriculum)
- Mar. 10. 1953 Chosun College approved as Chosun University
- May. 31. 1957 Graduate Schools for doctoral and honorary degrees established
- 1987~1988 1:8 Movement launched for the recovery of the founding spirit and democratic development of education

1991~

- Aug. 13. 1995 Gwangju-Jeonnam Center of the Korea Institute of Industrial Technology established and designated by the Ministry of Commerce & Industry
- Feb. 3. 1997 Voluntary Service Corps established
- Mar. 1. 1997 Industry-University Cooperation Foundation established
- Nov. 10. 1997 Selected by the Ministry of Education for the Local University Specialization Project in the field of Industrial Design
- Aug. 4. 1999 Internet Business Incubator Center established as designated by the Small & Medium Business Administration
- Jul. 1. 2000 Designated as a national advanced Engineering Research Center by the Ministry of Education
- Apr. 23. 2001 ISO 9001 authentication for International Standard in Quality Management System Education & Administrative Service
- Aug. 17. 2002 Selected as an Advanced University for Education Reform by the Ministry of Education
- Jun. 17. 2002 Selected for the New Universities for Regional Innovation (NURI) project
- Apr. 26. 2006 Selected for the STEP 2 BK21 (Brain Korea 21) project by the Ministry of Education
- Jul. 1. 2009 Selected for the Human Resources Development Project for Leading Industries in the special metropolitan Economic Zone
- Mar. 18. 2010 Selected for the University Educational Capacity Enhancement project

2011~

- Mar. 28. 2012 Selected for the Leaders in Industry-University Cooperation (LINC) project
- Apr. 23. 2012 LINC Project Team established
- Aug. 21. 2013 Selected for the Brain Korea 21 Program for Leading Universities & Students (BK21 PLUS) project
- Jul. 1. 2014 Selected for the Local University Specialization project
- Aug. 21. 2014 Advancement of College Education (ACE) project team established
- Jun. 9. 2015 Selected for establishment of a national Medical Research Center (MRC)
- Jun. 20. 2015 Selected as the supervising university for the University ICT Research Center Development Support Project
- Jul. 20. 2015 Selected for the 2015 Support for High School Education project
- Oct. 16. 2015 Awarded Grand Prize for ‘Advanced Educational Capability’ from the University News Network

2017~

- Jan. 10. 2017 ‘CU Again 72,000’ Vision Festival
- Mar. 1. 2017 Selected as Support Project for SW-Central University
- Mar. 1. 2017 Selected as Leading Entrepreneurship University
- Apr. 1. 2017 Selected as International Cooperation Initiative University Development Project
- Apr. 1. 2017 Selected as Leading Development Project for Industrial-Academic Cooperation(LINC+)
- Aug. 2017 Established College of Future Society Convergence
- Jan. 2. 2018 Successful launch of ‘STEP Cube Lab’, the first satellite developed in Honam area
- Dec. 2018 Dementia National Policy Research Group obtained Medical Device Authorization using Korean standard brain map (Selected as the Top 10 News of Science and Technology in 2018)



Students fundraising in the city of Mokpo and the surrounding districts of Muan



Memorial photograph in front of the First Completed School Building



Protest for academic democracy and independence



The School Landscape in 2007



Monument for Chosun College Founders’ Association



Chosun University symbolic Baekhak Tower



CU Again 72,000 Performance sharing



CU Industry University Cooperation EXPO

Designing Chosun University’s first foundational century through the spirit of the CU Again 72,000

Chosun University will take a leap into the future towards successfully achieving its first century, advancing the noble philosophy and values of the university’s 72,000 Founders’ Association members. 72,000 members from various social echelons and generations came together in 1946 after Korea’s liberation. With the same spirit as the original founders, a new human network will be built through the CU Again 72,000 project. The human network and development funds established through the CU Again 72,000 project will be used to design the university’s first “foundational century.” Chosun University will continue its support and contributions to the local communities and citizens who led its development into a prestigious educational institution.

01 HUMAN NETWORK OPERATION



- Establish a human network of 72,000 people, connecting alumni, students’ parents, and local citizens
- Build an industrial-academic-research-governmental exchange network with local governments, companies, social organizations, etc
- Enhance the value of the foundation to Founders’ Association members and their descendants

02 DEVELOPMENT FUND



Cash Fundraising	72,000 people × 10,000 won/month × 12 months = 8.64 billion won/year
Goods Fundraising	Real estate or securities, relics, artwork, patents, intellectual property, talent donations, etc.

03 GOALS



Recovery of humanism in the digital society,
lead Asia’s university renaissance:



Chosun University’s “365 PLAN” to be Asia’s best promoter of a university renaissance

The foundational century is strengthened by the CU Again 72,000, and will become ever stronger as it is driven by new management philosophies and progressive strategies. To achieve a university renaissance, Chosun University established its 365 Plan consisting of 3 missions, 6 management philosophies, and 5 execution strategies under the vision creating a ‘GREAT CHOSUN HUMAN UNIVERSITY’. The university renaissance will bloom on the basis of 73 years of history and tradition.

VISION Humanism raised through the light of a great history



GREAT CHOSUN

Global HRD (Education)	The 4th Industrial Revolution and national reunification Fostering of global, creative, and empathetic talents
R&D Systemization (Research)	Establishing a life-long support system for active research
Economic Strength (Finance)	Fundraising based on the networking of university faculty, researchers and students, gaining of financial assets and endowments, networking with governmental agencies, companies and alumni, etc.
Attractive Story Creation(Brand Value)	Branding of the university’s research accomplishments, medical treatments, facilities, culture, history, endowments, etc.
Thinking Collaboration (Administration)	Establishing collaborative administrative systems reflecting fair personnel management, autonomy and responsibility

HUMAN UNIVERSITY

• Building of the Gwangju Research Institute and Global Citizen College
• Building of a Global Voluntary Service Center
• Founding of a Citizens’ Cultural Orchestra
• Research and educational support for resolving social issues
• Support for youth cultural activities and globalization scholarships
• Collaboration with city, district and county local governments
• Carry forward the Campus Gallery project

The 365 Plan



MISSION	MANAGEMENT PHILOSOPHY	EXECUTION STRATEGY
3 Science Bridge Science-centric Human Bridge Human-centric Ecomony Bridge Finance-centric	6 D Data management E Empowerment management S Service management I Insight management G Global management N Network Management	5 G Global HRD R R&D Systemization E Economic Strength A Attractive Story Creation T Thinking Collaboration

University Specialization Project Fields



NEXT-GENERATION ADVANCED PARTS MATERIALS	MEDICAL BIOTECHNOLOGY	NEW ENERGY FOR CLIMATE CHANGE	IT MEDIA CULTURE CONTENTS
• Interaction cars • Machine-based convergent parts • LOHAS new materials • Next-generation unmanned devices • IoT home appliances • Smart manufacturing production • Intelligent robots for domestic use	• Health promotion business • 3D printing biomaterials • Brain cognition precision medicine • Architectural design for the aged society	• Renewable energy • CDM commercialization • ICBM-based Smart City	• Global business • Intepretation for medical treatment • Cultural business for urban restoration of traditional markets • Virtual reality cultural contents education

GREAT PROSPERITY

Chosun University is opening a new future with its human network, connecting people to people

Chosun University will realize university innovation and development to prepare for the next century, based on its history of 73 years. The initials of 'GREAT' stand for the five development strategies while 'HUMAN' stands for Chosun University's warm humanism at 36.5°C to all social minors. Thus, the new vision of Chosun University is to be the 'GREAT CHOSUN HUMAN UNIVERSITY'. Chosun University will develop into a humanistic university where everybody is free to study, research and learn.

- 24 Global HRD
- 26 R&D Systemization
- 28 Economic Strength
- 30 Attractive Story Creation
- 32 Thinking Collaboration



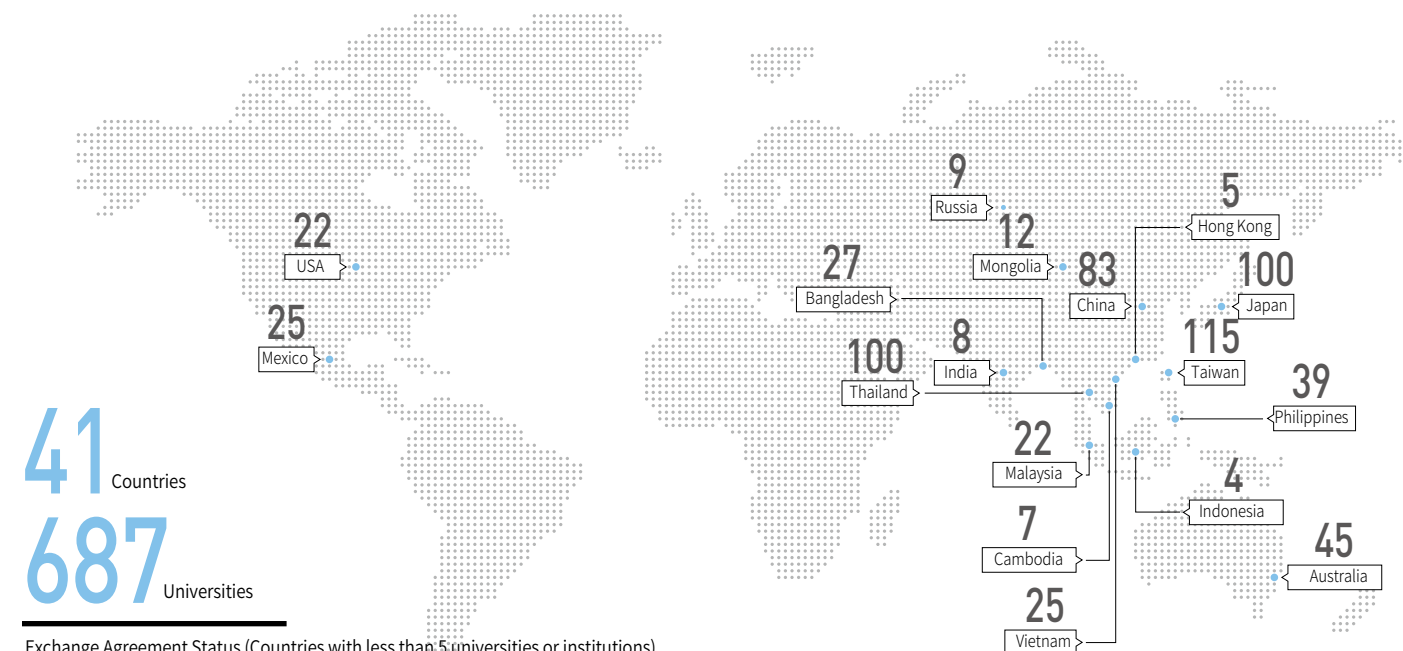
Global HRD

Advancing from a University Renaissance to an Asian Renaissance with creativity and empathy

Education at Chosun University has always been human-centric. In our rapidly changing society, the university cherishes human values to foster future oriented global talents. It will foster leaders who empathize and interact with the community and its people, and activists who contribute to society. In turn, it will produce talents who are active in resolving social issues through communication and growth with society.

In order to achieve this, Chosun University will establish a future-oriented global, creative and empathetic educational system to execute convergent education. It will also operate various projects connecting the nation, region and companies. There will soon be established International Affairs Department and that will offer internships and foster exchange with students from around the world and provide them with the support they need. Chosun University will head toward the new century with talents that communicate with society with global competences.

| Exchange Agreement Status (as of Dec, 2018) |



41 Countries
687 Universities

Exchange Agreement Status (Countries with less than 5 universities or institutions)

Laos(1), Macau(1), Myanmar(2), Brunei(1), Singapore(2), Uzbekistan(3), New Zealand(2), Samoa(1), Fiji(1), Canada(2), Chile(1), Columbia(1), Germany(2), Saudi Arabia(1), Spain(2), England(2), Poland(1), France(1), Ethiopia(1), Uganda(1), Egypt(3), Kenya(4), Congo(1), Tanzania(2)



R&D Systemization

Reinforcing productive education to rise as a Mecca of industrial-academic cooperation

Chosun University’s research infrastructure is the highest standard in Korea, reinforcing “productive education” which is one of its founding principles. Because of the university’s success in producing tangible results it has been selected by the government for large-scale national projects including Leaders in Industry-University Cooperation (LINC), Advancement of College Education (ACE), Creative Korea (CK-1), BK21 Plus, Early Diagnosis Technology Development for Dementia, and is engaging actively in advanced research.

In June 2005, Chosun was the first university in Korea to establish an industry university cooperation campus within the nearby Scientific Industrial Complex demonstrating a new paradigm for industry-university cooperative education. In 2010, a technology holding company was established for the first time in the Honam and Jeju regions for commercializing the university’s advanced patented technologies. Furthermore, the Business Incubation Center was newly constructed (2001), the Productive Business Incubation Center was built within the industry-university cooperation campus (2008), and the Business Incubation Center was built within the Wando Marine Biology Research and Education Center (2015). As a result, it is the only university in the district that has been designated three times for construction projects, and is currently the largest business incubation center in the region.

University			
Jun.2014 ~ Feb. 2018	Advancement of College Education Project	Mar.2017 ~ Feb. 2022	Ministry of Employment and University Job Center Project
Jul. 2014 ~ Feb. 2019	Creative Korea-1 (CK-1)	Apr. 2017 ~ Feb. 2022	Society Customized Leaders in Industry-University Cooperation Foster Project(LINC+)
Mar.2016 ~ Feb. 2017	Support for High School Education Project		
Mar.2017 ~ Dec. 2020	Support Project for SW-Central University	Jun.2017 ~ Jun. 2019	Lifelong Education System Support Project

Industry-University Cooperation Group			
Mar. 1. 2006~ Feb.29. 2016	Regional Innovation Center for dental precision equipment and parts	May 1. 2014~ Dec.31. 2016	Citizens' Physical Strength Enhancement Project
Mar. 1. 2006~ Feb.29. 2016	Operation of Korea Marine Venture College	Jun. 1. 2014~ Feb.28. 2019	Core Industry-Specialized Manpower Development Project
Mar. 17. 2008~ Feb.29. 2016	Support for the Common Use of Research Equipment project	Jun. 16. 2014~ Jun.15. 2016	Regional Business Incubation Support Project (Innopolis Campus Development)
Sep. 1. 2008~ Aug.31. 2017	Medical Research Center (MRC) for Oral Disease Regulation of the Aged	Oct. 1. 2014~ Nov.30. 2016	University-Industry Convergence Research Village Support Project
Dec. 1. 2008~ Jun 30. 2018	Information Center for Korean Studies	Oct. 21. 2014~ Dec.31. 2017	Operations Management Project for Gwangju Dong-gu Children Feeding Management Support Centers
Mar. 1. 2009~ Feb.28. 2019	Resource Development Project for University Specialization		
Apr. 5. 2010~ Mar. 31. 2016	Common Laboratory Center	Jan. 1. 2015~ Dec.31. 2016	Gwangju Employee Health Center Management
May 1. 2010~ Apr. 30. 2020	Korean Classical Literature Translation Support Project	May 1. 2015~ Apr. 30. 2018	Information and Communications, Broadcasting Research Development Project
Oct. 1. 2010~ Jan. 31. 2016	Creative Business for the Youth Support Project	Jun. 1. 2015~ Dec.31. 2018	University ICT Research Center Development Support Project
Jun. 1. 2011~ Jun. 30. 2016	Construction of Industry-affiliated Research Institute	Jun. 1. 2015~ Feb.28. 2022	Medical Research Center (MRC) Cancer Malignant Mutation Research Center
Sep. 1. 2011~ Aug.31. 2016	Basic Research Center Support Project	Mar. 1. 2016~ May31. 2017	Creative Leadership University Development Project
Jan. 1. 2012~ May31. 2016	Business Incubation Leadership Development Project	Jun. 1. 2016~ Jun.30. 2026	Energy Manpower Development Project
Apr. 1. 2012~ Feb.28. 2017	Leaders in Industry-University Cooperation (LINC) Development Project	Jun. 1. 2016~ Feb.28. 2021	Infectious Disease Emergency Response Technology Development Project
Nov. 1. 2012~ Jan.31. 2016	International Common Technology Development Project (strategic connection to key and new-growth industries)	Jun. 1. 2016~ Feb.28. 2021	Brain Science Source Technology Development Project
		Jun. 1. 2016~ Jun.30. 2021	Energy Human Resources Development Project
Dec. 6. 2012~ Oct. 31. 2017	Nuclear Energy Advanced Technology Research Center	Mar. 1. 2017~ Dec.31. 2020	SW-Centered University Support Project
Jan. 1. 2013~ Jun.30. 2016	High Blood Pressure & Diabetes Registration Management Process	Mar. 1. 2017~ Feb.25. 2022	Society Customized Leaders in Industry-University Cooperation Foster Project(LINC+)
Mar. 1. 2013~ Feb.28. 2018	Talent Development Project for Industrial Convergence Specialization	Apr. 1. 2017~ Mar.31. 2021	Selection of International Cooperation Initiative University Development Project
Jun. 1. 2013~ Apr. 30. 2016	Regional Specialization Business Development Project	Jun. 1. 2017~ Feb.28. 2023	University Priority Research Institute Support Project (the field of engineering)
Sep. 1. 2013~ Nov.11. 2016	University-Industry-Research Technical Development Project	Jun. 1. 2017~ Dec.31. 2024	Information and Communications Research and Development Project
Sep. 1. 2013~ Jul. 31. 2019	Bio- and Marine Technology Development Project	Jan. 1. 2018~ Dec.31. 2020	Project for the Selection of the Fishery Safety and Clearance Center
Sep. 1. 2013~ Aug.31. 2020	BK21+ Project_Future-Oriented Creative Talent Development	Apr. 1. 2018~ Dec.31. 2020	Grassroots enterprise foster project
Sep. 1. 2013~ Aug.31. 2020	BK21+ Project_Specialization Talent Development	Jul. 1. 2018~ Jun.30. 2023	Dental biosorbent material components support small business partners
Nov.20. 2013~ Nov.19. 2016	High Added-Value Food Technology Development Project	Jul. 18. 2018~ Jun.30. 2023	Atomic Propulsion Technology Research Center
Nov.20. 2013~ Jun.19. 2019	Neuroscience Original Technology Development Project	Aug. 1. 2018~ Feb.28. 2019	Youth TLO Development Project

Economic Strength



Chosun University aims to realize financial integrity based on a network of trust

In 1946, the 72,000 citizens who participated in fundraising efforts were a valuable human asset that built the foundation for our university. Last year, Chosun University celebrated the 70th anniversary of its foundation, and now the objective of the 'CU Again 72,000 Project' is to resolve the current financial problems so that the faculty may focus on research and administration. The means to achieve this will be "bridge leadership" whereby a human network is built so that people will be connected in a manner that will revive the noble intentions of the Founders' Association.

Furthermore, the financial reinforcement system, activation of academic industries, profit model for university space and creative assets development will contribute to the fundraising from local governments, companies and alumni networks. As a result, all these endeavors will enhance the status and competence of Chosun University as a prestigious educational institution that will design the first foundational century.

CU Again 72,000 Development Fund annual target amount

8,640,000,00

56 start-up clubs, 819 members

56

819

Financial assistance project for the State and Local Government in the last three years

159,513,174,000

Year of 2016

52,398,889,000

Year of 2017

50,412,318,000

Year of 2018

56,701,967,000

Chosun University benefits people and society with its competent university brand

Chosun University is included in the top 15 universities in Korea. Furthermore, it has enhanced its global brand value through globalization activities, such as the exchange of faculty, students and programs with globally leading universities.

Chosun University realizes a democratic, transparent university convergence system to create a culture where various opinions are accepted democratically, and all members respect, unite and prosper together.

In the future, Chosun University will continue to enhance its university brand value through developing capabilities in research, medical treatment, space, culture, history, donation and other fields. In order to achieve this, plans have been made including the branding of the National Research Team for Dementia, MRC, RIC and other competent research centers, branding of hospitals, dental hospitals, and the Graduate School of Pharmacy's Specialization Centers and Clinical Research, story development of the Humanities and Arts campuses, creation of the Healing Park, donations and voluntary work, and branded businesses connected to the regional society.

Attractive Story Creation

▶ 2018
Environmental volunteer activities of
medical schools with local communities



▶ 2018
College of Dentistry_Oral Health Protection Event

▶ 2018
CU Education Volunteer Group's educational volunteer
activities at Heuksan Middle School in Shinan



▶ 2019
Overseas Volunteer Group_Education &
Housing Architecture Service in Cambodia

2019

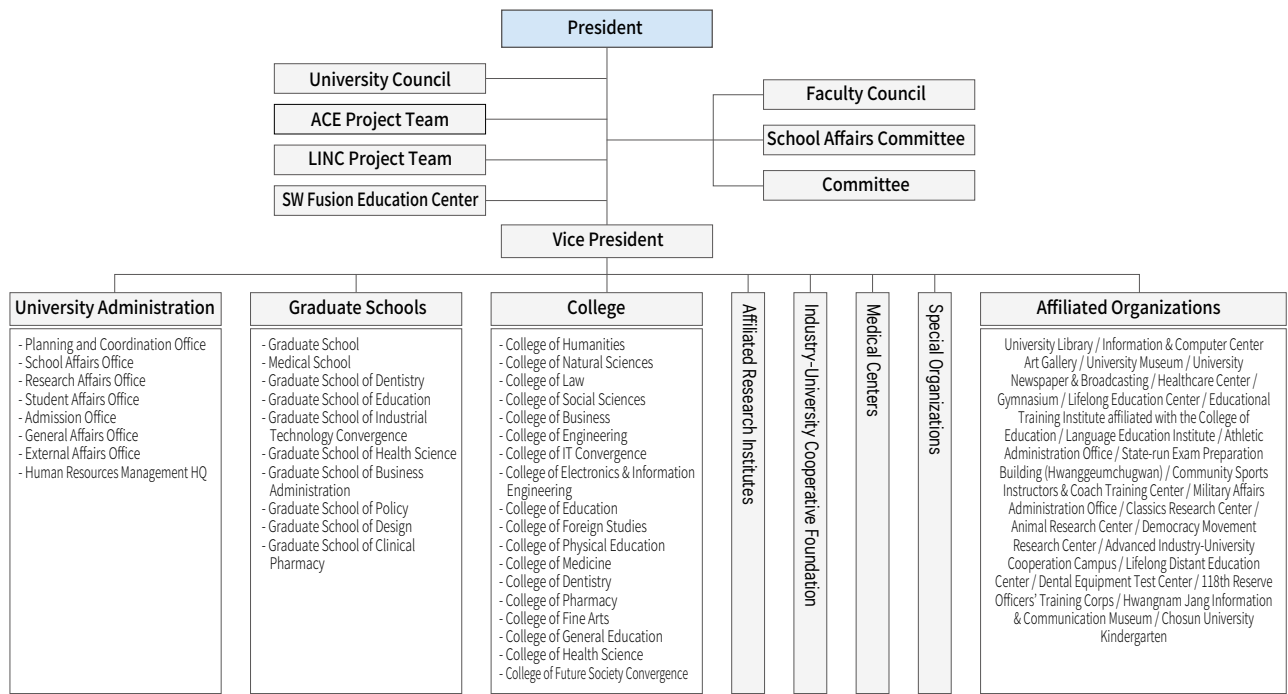
CHOSUN UNIVERSITY
BROCHURE

Thinking Collaboration!

Work happily and share warmth to create an interactive and cooperative community

Chosun University and its 36.5°C humanism is based on “happiness, warmth and cooperation of communities.” It has a human-centric system that values people, which is the basis for its talent recruitment, and a balanced HR system, which cultivates communication and harmony. Furthermore, it will take the position as the humanistic cradle of talent development that shares warmth with the regional society. This is the driving force of Chosun University’s history of 70 years, and its advance into the new century.

| Organizational Chart (as of Dec, 2018) |



GREAT NURTURE

We foster global professional specialists who spread warm humanism all across the world.

The philosophy of the 72,000 Founders’ Association, “to build a strong nation and develop talent for world prosperity” has been followed up by “to develop specialized talents who will contribute to society through profound academic research, education and voluntary work.” Chosun University will continue its efforts towards developing talented leaders of people and society through the evolution of educational systems.

- | | |
|--------------------------------|--|
| 36 College of Humanities | 54 College of Physical Education |
| 38 College of Natural Sciences | 56 College of Medicine / Graduate School of Medicine |
| 40 College of Law | 58 College of Dentistry / Graduate School of Dentistry |
| 42 College of Social Sciences | 60 College of Pharmacy |
| 44 College of Business | 62 College of Art and Design |
| 46 College of Engineering | 64 College of General Education |
| 48 College of IT Convergence | 66 College of Health Sciences |
| 50 College of Education | 68 College of Future Society Convergence |
| 52 College of Foreign Studies | 70 Graduate Schools |



**DEVELOP
CREATIVE TALENT**
Creative talent with a focus on originality

**DEVELOP
TECHNOLOGICAL
TALENT**
Develop talent for technological leadership in the information era



**VOLUNTEER
SPIRIT**
Develop professional talent with a global perspective

**GLOBAL
PERSPECTIVE**
Develop social leaders with a strong volunteer spirit

2019

CHOSUN UNIVERSITY
BROCHURE



COLLEGE OF HUMANITIES

RELATED DIVISIONS AND DEPARTMENTS

Department of Korean Language & Literature

<http://www.chosun.ac.kr/korean/>

Department of English Language & Literature

<http://www.chosun.ac.kr/english/>

Department of History & Culture

<http://www.chosun.ac.kr/history/>

Department of Philosophy

<http://www.chosun.ac.kr/philosophy/>

Department of Creative Writing

<http://www.chosun.ac.kr/writing/>

Department of Korean Literature in Classical Chinese

<http://www.chosun.ac.kr/chns/>



GREAT CHOSUN HUMAN UNIVERSITY

GREAT NURTURE

36
/
37

EXPAND TRUE HUMAN VALUES

The College of the Humanities was established in 1946 aiming to foster an understanding of humanism based on literature, history and philosophy. In the 21st century, the college is focusing its efforts on showcasing the value of the humanities in an era of rapid technological development, swift access to knowledge and increased appreciation for culture. In connection with the Gwangju Asia Culture City, it is focusing its education on humanities and related academics with the aim of developing talents who will take active roles in various cultural industries. In this respect, university and affiliated research centers such as the Humanities Research Institute and Classics Research Center have been established. Furthermore, it has built co-operative systems with local universities and the community, and is focusing its efforts on developing talent to create cultural content that utilize high-tech media with its foundation on the classics. It is devoted to the primary role of the humanities, which can be neglected in the current age of limitless competition, and contributes to creating a bright future in co-operation with the local community.

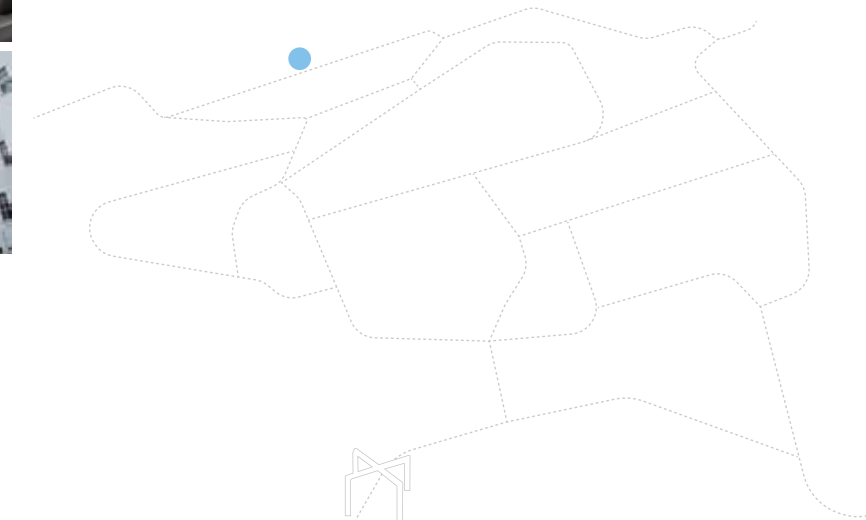


PURPOSE

Aiming for humanism, the purpose of the College of the Humanities is to reestablish the position of the humanities in modern society, create new theories and knowledge, and enhance the quality of life through its application. The college is taking the role to connect the humanistic spirit to social ideologies, to establish the identity of Korean literature, contribute to the growth of local and national culture, national development, and world prosperity.

TARGET

- To develop the critical, intellectual and practical thinking skills required for the field of the humanities including language, literature, history and philosophy.
- To promote practical efforts and academic exchange to contribute to society and the times.
- To develop talents that will lead the globalization and information age through comprehensive culture research with its foundation on humanities.



2019

CHOSUN UNIVERSITY
BROCHURE



COLLEGE OF NATURAL SCIENCES

RELATED DIVISIONS AND DEPARTMENTS

Department of Mathematics

<http://www.chosun.ac.kr/math/>

Department of Computer Statistics

<http://www.chosun.ac.kr/css/>

Department of Physics

<http://www.chosun.ac.kr/physics/>

Department of Chemistry

<http://www.chosun.ac.kr/chem/>

Department of Life Sciences

<http://www.chosun.ac.kr/biology/>

Department of Biomedical Science

<http://www.chosun.ac.kr/biomed/>

Department of Food & Nutrition

<http://www.chosun.ac.kr/sikyoungh/>



GREAT CHOSUN HUMAN UNIVERSITY

GREAT NURTURE

38
/
39

BRING LIGHT TO THE WORLD THROUGH INTEGRATED SCIENCE

The Chosun University College of Natural Sciences has a sound history and tradition in the research of basic sciences. It focuses on basic theories concerning natural phenomena, and also theories and application capabilities required for high-tech science and industrial development. Natural science is the basic study of various theories, from material analysis to life phenomena. Thus, it is the origin of the integrated sciences necessary for developing new technology to enhance national competence in the 21st century. In an era of advanced science, the Chosun University College of Natural Sciences boasts an optimized environment for education and research, with scholarships and employment support systems. The college has built an impressive reputation as a result of its accomplished research so much so that its' researchers have been selected for numerous important national projects. Furthermore, the college has gained world-class status through its work with specialized research institutes including the Chosun University National Research Project for Dementia supported by the Ministry of Science, ICT and Future Planning, the BK21 PLUS Project supported by the Ministry of Education, & Marine Bio Research, and the Education Center supported by the Ministry of Oceans & Fisheries.



PURPOSE

The College of Natural Sciences has its foundations rooted in the educational philosophy of Chosun University. Its purpose is for students to acquire basic theories on natural phenomena and application capabilities, as well as the necessary creative thinking skills and ethics to contribute to the development of science, technology and enhancement of people's lives.

TARGET

- To foster experts for the research of natural phenomena.
- To actively respond to global academic trends in the natural sciences, and develop skills to acquire the latest information.
- To educate for creativity, originality and quality of life enhancement.
- To foster leaders of the future society through diverse teaching-learning methods.
- To educate according to the needs of society and industry based on basic scientific knowledge.



2019

CHOSUN UNIVERSITY
BROCHURE



COLLEGE OF LAW

RELATED DIVISIONS AND DEPARTMENTS

Department of Law

<http://www.chosun.ac.kr/lawdep/>

Department of Pre-Law School

<http://www.chosun.ac.kr/prelaw/>

Department of Police Administration

<http://www.chosun.ac.kr/police/>



GREAT CHOSUN HUMAN UNIVERSITY

GREAT NURTURE

40
/
41

REALIZE SOCIAL JUSTICE AND ORDER

The College of Law was one of the leading departments at Chosun University's foundation in 1946. Since its founding, it has been educating students with a sense of mission and a spirit to take on challenges. Graduates from the College of Law have contributed to the modernization and democratization of Korea, and are actively working in the fields of law, politics and academics. The college boasts high-tech lecture rooms, seminar rooms, mock courtrooms, and its own library. Exam preparation rooms are open for students preparing for state-run exams. Furthermore, a wide variety of scholarship programs are supported, so all academically enthusiastic students may benefit from them. It has long been a tradition of Chosun University to develop students who can pass the very rigorous bar examination, or serve competently as police officers, court officials, public prosecutors, and be accepted into graduate schools of law. The college also aims to foster reliable legal talents for companies and society.

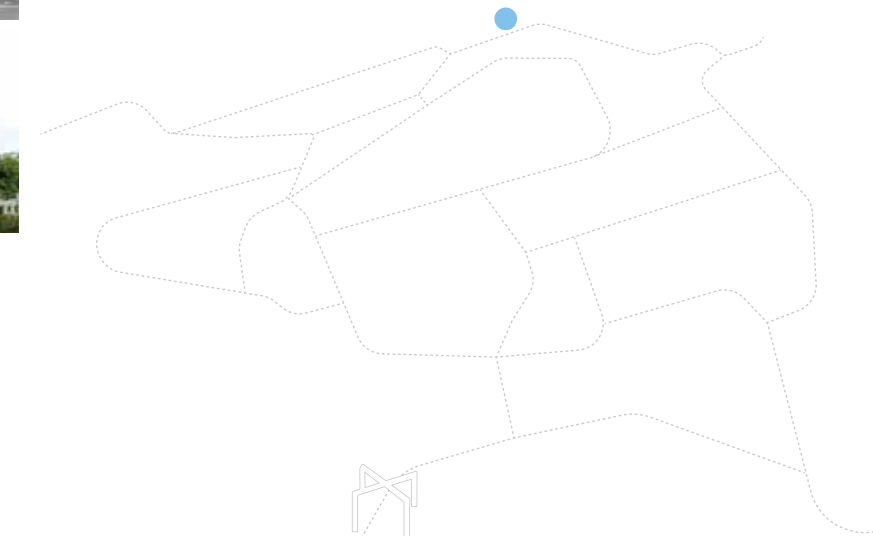


PURPOSE

To foster legal professionals for the knowledge and information society of the 21st century, and contribute to the growth of a creative law culture, thus realizing the foundational philosophy of the university.

TARGET

To develop professionals with both theoretical and practical knowledge in law in order to achieve the goals of the College of Law.



2019

CHOSUN UNIVERSITY
BROCHURE



COLLEGE OF SOCIAL SCIENCES

RELATED DIVISIONS AND DEPARTMENTS

Division of Public Administration and Social Welfare (Public Administration/Social Welfare)
<http://www.chosun.ac.kr/dpa/>

Department of Political Science & Diplomacy
<http://www.chosun.ac.kr/politics/>

Department of Journalism & Communications
<http://www.chosun.ac.kr/comm/>

Department of Military Science
<http://www.chosun.ac.kr/soldier/>



GREAT CHOSUN HUMAN UNIVERSITY

GREAT NURTURE

42
/
43

UNDERSTAND TODAY TO SHAPE TOMORROW

The College of Social Sciences aims at developing leaders for the digital era, who interpret humans and social phenomenon from various perspectives to understand the essentials of social phenomenon. The underlying philosophy guiding the college is co-operation and synergy. Systematic support for an academic community has been prepared through a broad curriculum, superior faculty and multimedia education environments. Furthermore, the college supports research activities to find and share alternatives to social matters, and is developing into a distinguished academic community through various symposiums and seminars. It shares a sense of mission that teachers and students should teach and learn from one another, and aim for a brighter future.

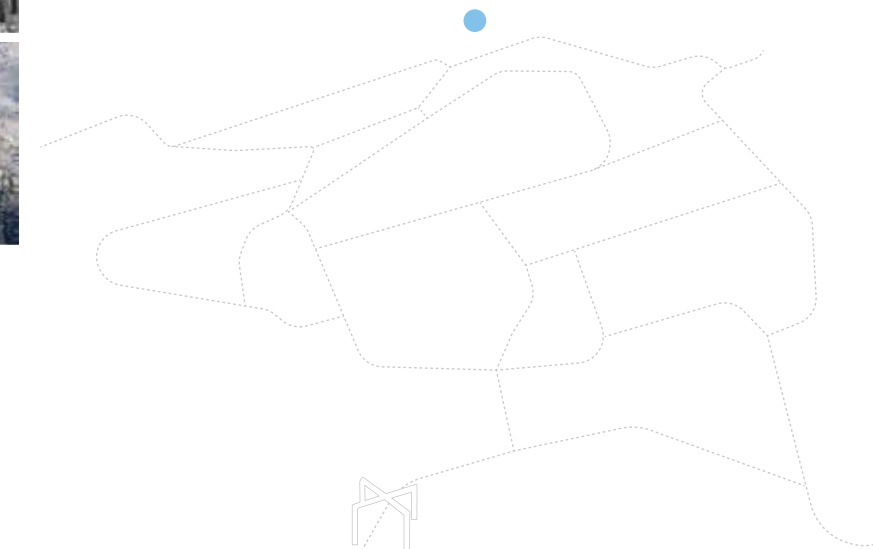
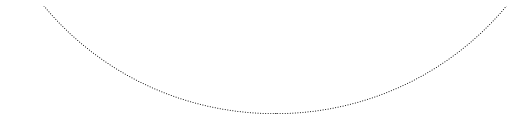


PURPOSE

To foster creative professionals in the field of social sciences, and to lead the development of the national society.

TARGET

- To develop professionals who respond actively in the global era, and work actively in main fields of society including politics, diplomacy and national unification.
- To foster professional talent for administrative management and high-quality social welfare, thus realizing an advanced administration and welfare society.
- To develop multi-skilled talent with practical work capabilities to understand and commercialize various communication processes in the multi-media, knowledge and information era.



2019

CHOSUN UNIVERSITY
BROCHURE



COLLEGE OF BUSINESS

RELATED DIVISIONS AND DEPARTMENTS

Division of Business Administration

<http://www.chosun.ac.kr/business/>

Department of Economics

<http://www.chosun.ac.kr/economics/>

Department of Trade

<http://www.chosun.ac.kr/trade/>



GREAT CHOSUN HUMAN UNIVERSITY

GREAT NURTURE

44
/
45

LEAD THE GLOBAL ECONOMY WITH PRACTICAL KNOWLEDGE

Since its founding in 1946, no fewer than 20,000 talented alumni have come forth. At present, there are 2,700 students enrolled and 50 professors who are moving the local school of business into the future. In order to respond to rapid changes, in addition to major subjects such as economics, business and trade, many industry-university co-operative educational projects and international projects are being pursued to develop professional talent in industrial marketing, China-focused businesses and East Asian economics. As a result, user-centric, 21st century global leaders with practical knowledge are being fostered.

Furthermore, various employment support programs for state-run examinations, certificates, practical language skills with native speakers, and competitions are being pursued. All education is centered on the university campus, developing into a distinguished university based on its 70 years of tradition.

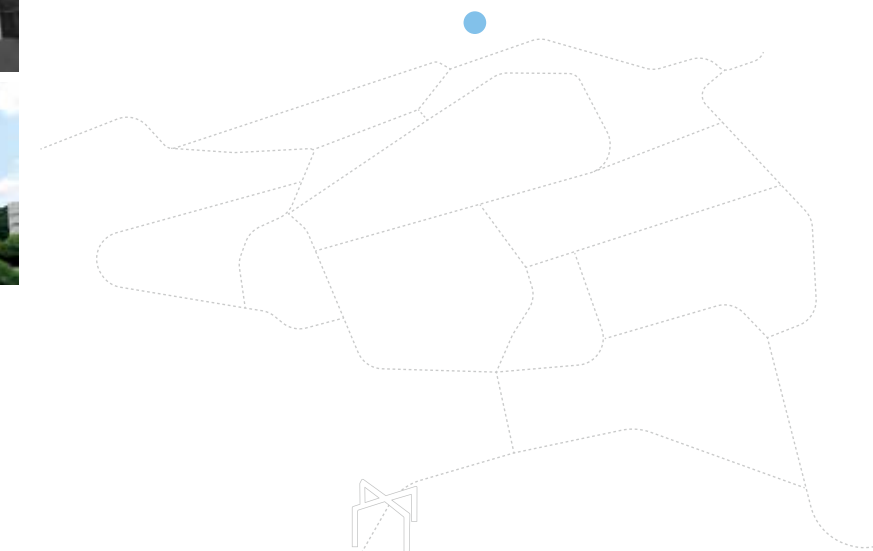


PURPOSE

To study and learn business based on the national education philosophy and Chosun University foundational philosophy while at the same time building cultural and moral refinement for global leadership.

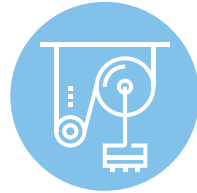
TARGET

- To develop creative talent that can manage social matters based on a balanced and realistic education.
- To develop devoted talent that realizes business knowledge in a just and ethical manner.



2019

CHOSUN UNIVERSITY
BROCHURE



COLLEGE OF ENGINEERING

RELATED DIVISIONS AND DEPARTMENTS

Department of Civil Engineering

<http://www.chosun.ac.kr/civil/>

Division of Architecture, Architectural Engineering

<http://www.chosun.ac.kr/architecture/>

Department of Mechanical Engineering

<http://www.chosun.ac.kr/cume/>

Department of Mechanical System Engineering

<http://www.chosun.ac.kr/cumse/>

Department of Biochemical & Polymer Science Engineering

<http://www.chosun.ac.kr/biocopol/>

Department of Materials Engineering

<http://www.chosun.ac.kr/mse/>

Department of Industrial Engineering

<http://www.chosun.ac.kr/ie/>

Department of Electrical Engineering

<http://www.chosun.ac.kr/electric/>

Department of Photonics Engineering

<http://www.chosun.ac.kr/photonic/>

Department of Naval Architecture Engineering

<http://www.chosun.ac.kr/naval/>

Department of Aerospace Engineering

<http://www.chosun.ac.kr/aero/>

Department of Environmental Engineering

<http://www.chosun.ac.kr/env/>

Department of Nuclear Energy Engineering

<http://www.chosun.ac.kr/nuclear/>

Department of Energy Resources Engineering

<http://www.chosun.ac.kr/ere/>

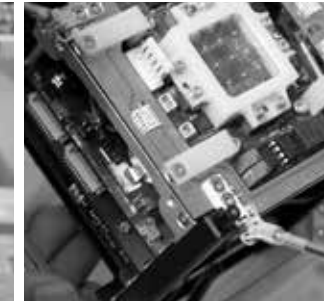
Department of Welding & Joining Science Engineering

<http://www.chosun.ac.kr/weldingjoining/>



ADD EMOTION TO ADVANCED TECHNOLOGY

The College of Engineering has developed continuously throughout its 70-year history. At present, it boasts no fewer than fifteen departments and more than 5,000+ enrolled students. One of the three founding philosophies of Chosun University is “productive education” In order to achieve this, industry, university and research institutes are organically connected at Chosun University, and they are connected so well that it has become the Mecca of industry-university co-operation in the Honam region. For the first time in Korea, an advanced industry-university cooperative campus was established within a local industrial complex, the Gwangju Scientific Industrial Complex. Talent with practical knowledge is being developed with advanced production equipment, R&D common application equipment, educational facilities, business incubators, and others. All the departments in the College of Engineering have acquired engineering accreditation and have been recognized for developing creative engineers and realizing the global standards of engineering education.

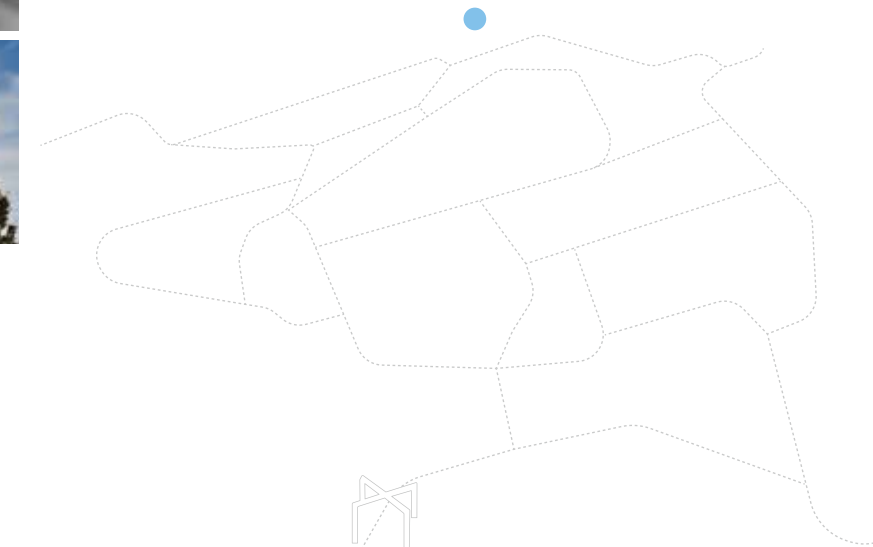


PURPOSE

To develop creative, holistic engineers who realize the university's foundational philosophy and contribute to the nation and human society

TARGET

- To develop professional engineers with creative spirit.
- To develop engineers that contribute to national and social development through industry-university co-operation.
- To develop engineers with global competence.



2019

CHOSUN UNIVERSITY
BROCHURE



COLLEGE OF IT Convergence

RELATED DIVISIONS AND DEPARTMENTS

Division of Electronics Engineering
(Electronic Engineering/Intelligent IoT)

<http://www.chosun.ac.kr/eic/>

Department of Computer Engineering

<http://www.chosun.ac.kr/ce/>

Division of Information and Communication
Engineering (Information and Communication
Engineering/Embedded and Information
Security)

<http://www.chosun.ac.kr/ice/>



GREAT CHOSUN HUMAN UNIVERSITY

GREAT NURTURE

48
/
49

LEAD HIGH TECHNOLOGY WITH INNOVATIVE PARADIGMS

The College of IT Convergence at Chosun University was the first IT department established in the Honam region. The faculty and staff, with their high-tech facilities and equipment, are recognized as leaders at developing IT talent who take the initiative in innovative revolutions. There are 2,000+ students enrolled across three departments in a high-tech building stretching over 18,000m².

The passionate lectures of the professors and their outstanding research achievements, active articpation in national projects, active participation in ITBI and IBI Center projects for local venture development, accreditations of all departments for engineering education all contribute to the development of creative engineers in the global era.

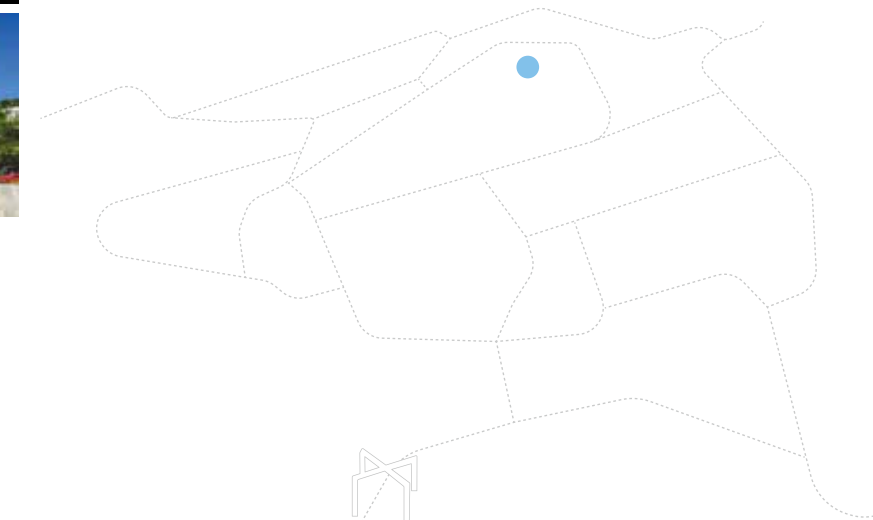


PURPOSE

To develop leaders who, with a futuristic perspective and vision, will play key roles in the information and communication industries and take the lead in globalization and localization of the 21st century.

TARGET

- To develop specialized talents who will be prepared for the globalization of information and limitless competition of technology.
- To execute field-oriented education in each discipline.
- To educate information leaders who take the initiative in information communication fields.



2019

CHOSUN UNIVERSITY
BROCHURE



COLLEGE OF EDUCATION

RELATED DIVISIONS AND DEPARTMENTS

Department of Korean Language Education

<http://www.chosun.ac.kr/koredu/>

Department of English Education

<http://www.chosun.ac.kr/egedu/>

Department of Special Education

<http://www.chosun.ac.kr/special/>

Department of Mathematics Education

<http://www.chosun.ac.kr/mathedu/>

Department of Physics Education

<http://www.chosun.ac.kr/phyedu/>

Department of Chemistry Education

<http://www.chosun.ac.kr/chemedu/>

Department of Biology Education

<http://www.chosun.ac.kr/bioedu/>

Department of Earth Science Education

<http://www.chosun.ac.kr/earth/>

Department of Music Education

<http://www.chosun.ac.kr/music/>

Department of Education

<http://www.chosun.ac.kr/edutrain/>



GREAT CHOSUN HUMAN UNIVERSITY

GREAT NURTURE

50
/
51

DEVELOP TALENTS FOR THE FUTURE WITH HUMANISM

The College of Education was established in 1965 and has since been developing teachers blessed with sound teaching philosophies, heart and expertise. Based on the philosophy that education begins with love, the faculty is considerate towards students while the students practice voluntary works and education training in no fewer than 100 affiliated institutions.

The College of Education has been selected for two projects of the Creative Korea-1 project in september 2014, which is a strategic project of the Ministry of Education. Participating students will receive scholarships for their four-year tuition fees, and develop into experts for local community development and related fields. Furthermore, it has established a U-Learning & Teaching Society with professors, students, alumni and local communities. It is reinforcing its position as the training center for advanced teachers who will lead lifelong education in the 21st century.



PURPOSE

To develop teachers with creative thinking skills for the global information society and advocating a solid teaching philosophy in line with the founding philosophy and education missions of the university. To develop skilled secondary education teachers with academic passion and heart who contribute to national and local community development.

TARGET

- To develop teachers with humanistic perspectives towards education.
- To develop teachers with expertise and open-thinking skills.
- To develop teachers with self-enrichment skills in the global, information society.



2019

CHOSUN UNIVERSITY
BROCHURE



COLLEGE OF FOREIGN STUDIES

RELATED DIVISIONS AND DEPARTMENTS

Department of English Language

<http://www.chosun.ac.kr/cueng/>

Department of Arabic Language

<http://www.chosun.ac.kr/arab/>

Department of Japanese Language

<http://www.chosun.ac.kr/japan/>

Department of Chinese Language and Culture

<http://www.chosun.ac.kr/china/>

Department of German Language and Culture

<http://www.chosun.ac.kr/germany/>

Department of Russian Language

<http://www.chosun.ac.kr/russia/>

Department of Spanish Language

<http://www.chosun.ac.kr/spain/>

Department of French and Francophone Studies

<http://www.chosun.ac.kr/french/>



GREAT CHOSUN HUMAN UNIVERSITY

GREAT NURTURE

52
/
53

COMMUNICATE WITH THE WORLD THROUGH WORDS AND LETTERS

The College of Foreign Studies at Chosun University was established in 1979 as the second of its kind in Korea.

Currently, it is the Honam region's only specialized institution for foreign languages from which many global talents have come forth.

The College of Foreign Studies has interpretation and translation laboratories where five languages can be interpreted simultaneously, multi-purpose lecture rooms to develop creative and problem-solving skills through integrated curriculums, and high-tech education facilities such as the Capstone Design Hall. It is conducting specialized education for eight world languages: English, Chinese, Japanese, Spanish, Arabic, German, French, and Russian. The faculty has rich expertise in each of the language groups and is developing international talent with linguistic and cultural communication skills for the 21st century.

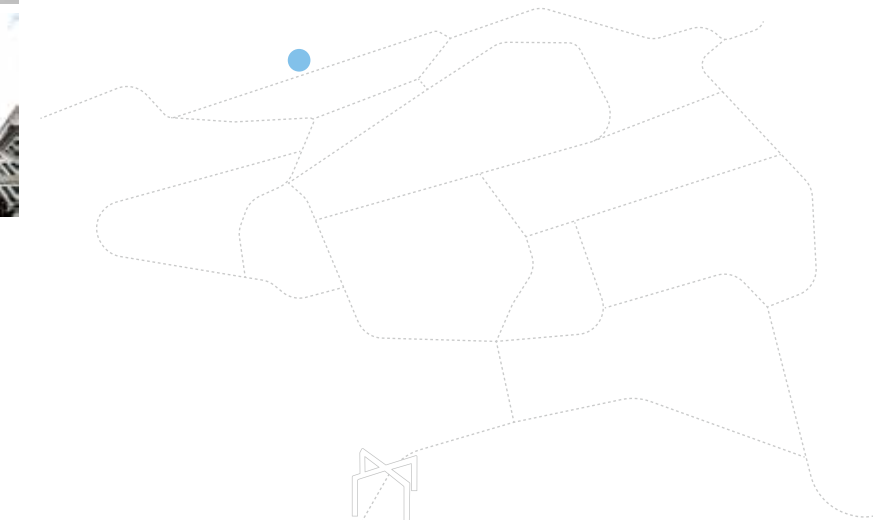


PURPOSE

To develop globally-minded regional experts with the linguistic skills and specialized knowledge needed to succeed in the globalization, information and localization era who will contribute to national and regional development.

TARGET

- To foster knowledge and creative character as an international regional expert.
- To acquire specialized knowledge of many fields, including culture, politics, economics and social dynamics.
- To acquire linguistic skills and basic academic knowledge for the region.
- To develop practical capabilities for international relations.
- To develop talent with a volunteer spirit for the globalization of local communities.



2019

CHOSUN UNIVERSITY
BROCHURE



COLLEGE OF PHYSICAL EDUCATION

RELATED DIVISIONS AND DEPARTMENTS

Department of Physical Education

<http://www.chosun.ac.kr/sports/>

Department of Sports Industry

<http://www.chosun.ac.kr/sportsin/>

Department of Taekwondo

<http://www.chosun.ac.kr/cutkd/>

Department of Performing Arts & Dance

<http://www.chosun.ac.kr/dance/>



GREAT CHOSUN HUMAN UNIVERSITY

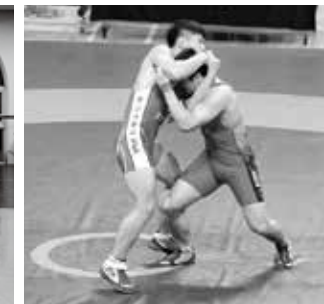
GREAT NURTURE

54
/
55

ENHANCE THE QUALITY OF LIFE THROUGH SPORTS

Due to the increase of national income and economic development, physical education has become one of the most promising businesses in the 21st century. The sports industry, with its high added-value, has grown significantly.

The College of Physical Education approaches its mission with a philosophy of holistic education to develop talented physical education instructors possessing creative thinking skills and a balance of knowledge, virtue and physical strength. The college also develops talent for sports industries who are skilled not only in sports but also in business and marketing. In order to achieve this, education in systematic, specialized theories and scientific experimentation and practice is taking place. Furthermore, the Teacher Certification Preparation Class is proud of its high acceptance ratio, and many secondary physical education teachers are coming forth.

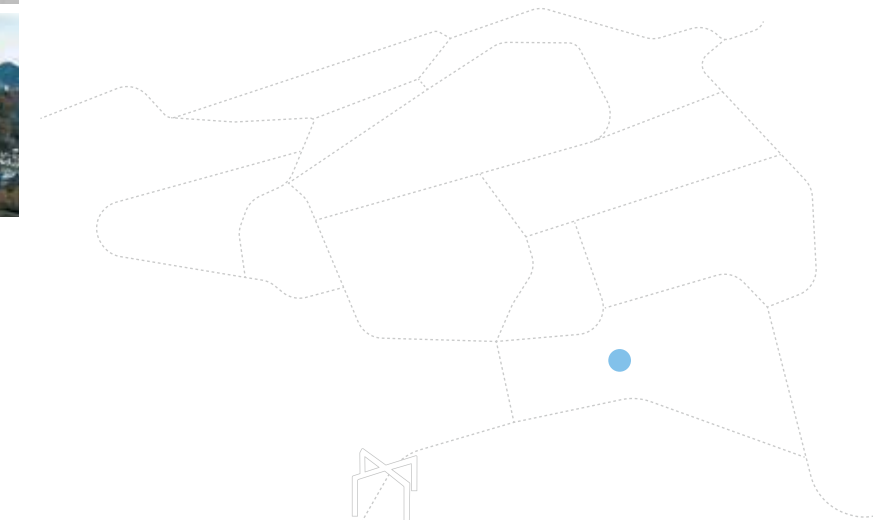


PURPOSE

To develop socially responsible, talented physical education instructors with specialized theoretical knowledge and scientific practical skills

TARGET

To develop physical education instructors and dancers with holistic physical (fitness and exercise), cognitive (specialized knowledge, high mental processes to respond to various situations, problem-solving skills) and ethical (spirit of sacrifice, self-confidence, responsibility, fairness, cooperation, law-abiding spirit), social service (promotion, protection, and development of national health) attitudes.



2019

CHOSUN UNIVERSITY
BROCHURE



COLLEGE & GRADUATE SCHOOL OF MEDICINE

RELATED DIVISIONS AND DEPARTMENTS

Premedical Course

<http://www.chosun.ac.kr/premedical/>

Department of Nursing

<http://www.chosun.ac.kr/nurse/>

GRADUATE SCHOOL OF MEDICINE

Class of Basic Medicine

Class of Clinical Medicine

Class of Medical Education



GREAT CHOSUN HUMAN UNIVERSITY

GREAT NURTURE

56
/
57

HEAL THE PAIN OF THE BODY AND SOUL

Established in 1967, the College of Medicine at Chosun University was the first local private medical school in Korea. The school has been developing skilled medical professionals with a sense of vocation and deep respect for life. The school is fully equipped with clinical training centers, clinical trial centers, multi-media education rooms, a problem-solving center, medical information center, and state-of-the-art anatomy training rooms. Self-initiated learning, integrated education, mock patient education, and advanced training education programs are all being conducted. Various international training programs are conducted in connection with overseas volunteer groups and training programs. Until 2016, it was operated by the Graduate School of Medicine but from 2017 it has been totally transferred to the College of Medicine to develop into an internationally competent medical school to lead Korea's medical education.

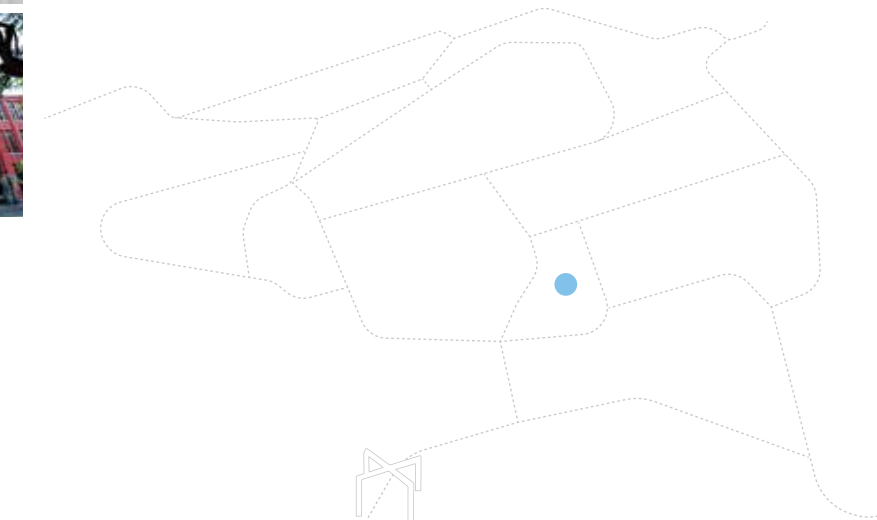


PURPOSE

To foster doctors and nurses for primary health and medical care possessing basic medical knowledge and skills, and to help them understand the sanctity of life and develop the sublime qualities that medical personnel should have.

TARGET

To educate the ethical norms that medical professionals should inculcate and the concern they should have for national and local social matters as well as a spirit to serve for the promotion of the health of local communities.



2019

CHOSUN UNIVERSITY
BROCHURE



COLLEGE & GRADUATE SCHOOL OF DENTISTRY

RELATED DIVISIONS AND DEPARTMENTS

Pre-dentistry

<http://www.chosun.ac.kr/dentistry/>

GRADUATE SCHOOL OF DENTISTRY

Basic Dentistry Program
Clinical Dentistry Program



GREAT CHOSUN HUMAN UNIVERSITY

GREAT NURTURE

58
/
59

FROM THE FIRST IN HONAM, TO THE BEST IN THE WORLD

Established in 1974, the College of Dentistry at Chosun University was the first of its kind in the Honam region. It aims at developing expertise in research, therapy and volunteer work through synergies of clinical practice, natural sciences and the humanities.

In 2009 it was changed to the Graduate School of Dentistry but in 2015 was reverted to the College of Dentistry.

The college is now taking a leap towards becoming a globally leading college with sisterhood relationships with the Gottingen College of Dentistry in Germany, Tokushima College of Dentistry in Japan, and the colleges of dentistry at Alabama University, San Francisco University and Pennsylvania University in the USA.

PURPOSE

To develop dentists who contribute to oral health through education, academic research and social service.

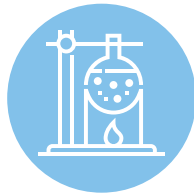
TARGET

- To apply basic dental medicine and related academics to solve clinical problems.
- To prevent, diagnose, and treat oral and maxillofacial diseases.
- To acquire the latest dental medicine information and accept selectively (critically).
- To understand social responsibilities as medical personnel, and solve oral health problems in the local community.



2019

CHOSUN UNIVERSITY
BROCHURE



COLLEGE OF PHARMACY

RELATED DIVISIONS AND DEPARTMENTS

College of Pharmacy
<http://www.chosun.ac.kr/pharmacy/>



GREAT CHOSUN HUMAN UNIVERSITY

GREAT NURTURE

60
/
61

RESEARCH HOW TO FOSTER HEALTHY LIVES

Since its founding in 1954, the approximately 4,800 graduates of the College of Pharmacy have been working actively as leaders in government affiliated institutions and research centers, hospitals, pharmacies and industrial organizations.

In 2011, the program was extended to six years (2+4) to reinforce expertise and practical harmaceutical education. Investments have been made in staff and facilities to become a global leader in the field, such as high-tech lecture rooms, excellent faculty, and the establishment of the Graduate School of Clinical Pharmacy.

Systematic education for the holistic process of new pharmaceutical development, from basic theories on natural substances and Oriental medicinal resources to synthesis, pharmacology and medication is being offered. And, importantly, sisterhood relationships have been made with globally distinguished universities to develop global talents.



PURPOSE

To educate students on both the theories and practices of pharmaceuticals and medical supplies and provide a broad and practical education with advanced educational technology. To contribute to the prevention and treatment of diseases while promoting national health through fostering skilled medical professionals.

TARGET

- To develop pharmacists capable of precise prescription and dosage administration, based on rational medicinal therapy and medical information (reinforcement of clinical pharmacy).
- To develop research capabilities in the fields of medicine and pharmacology.
- To develop pharmacists for the fields of health, environment and food hygiene (focus on practical education).



2019

CHOSUN UNIVERSITY
BROCHURE



COLLEGE OF ART AND DESIGN

RELATED DIVISIONS AND DEPARTMENTS

Dept. of Drawing & Painting

(Western/Korean techniques)

<http://www.chosun.ac.kr/painting/>

Dept. of Arts (Modern Sculpture/Visual Culture)

<http://www.chosun.ac.kr/fineart/>

Dept. of Visual Design

<http://www.chosun.ac.kr/visual/>

Division of Design (Interior Design/ Textile &

Fashion Design/Furniture & Ceramic Design)

<http://www.chosun.ac.kr/design/>

Dept. of Design Engineering

<http://www.chosun.ac.kr/technodesign/>

Dept. of Cartoons & Animation

<http://www.chosun.ac.kr/cartoon/>



GREAT CHOSUN HUMAN UNIVERSITY

GREAT NURTURE

62
/
63

CREATE DIFFERENCE WITH DIFFERENTIATED PERSPECTIVES

The College of Art & Design is a specialized school that develops global talent with international capabilities in cooperation with the National Asia Culture Complex. In order to achieve its goal to become the core of Asian culture and a Mecca of the arts industry in the 21st century, it executes specialized integrated education utilizing advanced facilities and equipment. The college is comprised of 6 departments offering 10 majors. No fewer than 40 professors with international experience and solid careers are fostering students' limitless potentials through high-tech facilities and advanced educational programs. Furthermore, it has entered into business agreements with foreign distinguished arts and design colleges, and specialized institutions. The Affiliated Graduate School of Design, Culture and Art Industry Research Center, Chosun University Art Gallery, and Kim Bo-Hyun-Sylvia Wald Museum of Art are organically connected to develop into a globally distinguished school of art.

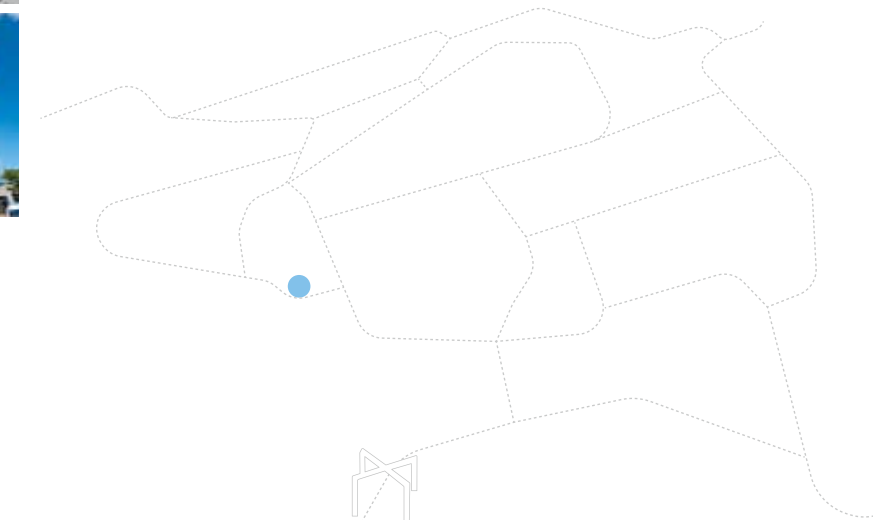


PURPOSE

To develop creative, specialized talent in the specialized, diversified, information oriented era of art and design

TARGET

- To develop specialized artists and creative designers (customized education).
- To develop life arts and environment design skills (the connection of art and everyday life).
- To educate art theory with practical skills.



2019

CHOSUN UNIVERSITY
BROCHURE



COLLEGE OF GENERAL EDUCATION

RELATED DIVISIONS AND DEPARTMENTS

Division of Undeclared Majors
<http://www.chosun.ac.kr/dum/>



GREAT CHOSUN HUMAN UNIVERSITY

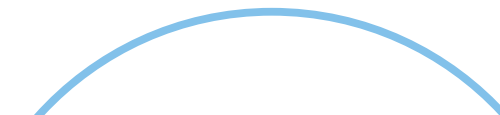
GREAT NURTURE

64
/
65

FOSTER TALENTS FOR THE CURRENT ERA

The College of General Education aims at developing ethical personalities with aesthetic sensibilities, integrated and creative thinking skills, and communication skills as community members in the global era.

The Division of Undeclared Majors recruits students without a fixed major who, after one year of exploration, select their major. Intensive English as a second language classes and “thinking and expression” courses are mandatory for all students so that they may develop global communication, critical thinking and logical expression skills. Supervisors are allocated to each of the six majors to provide counseling from entrance until major selection.

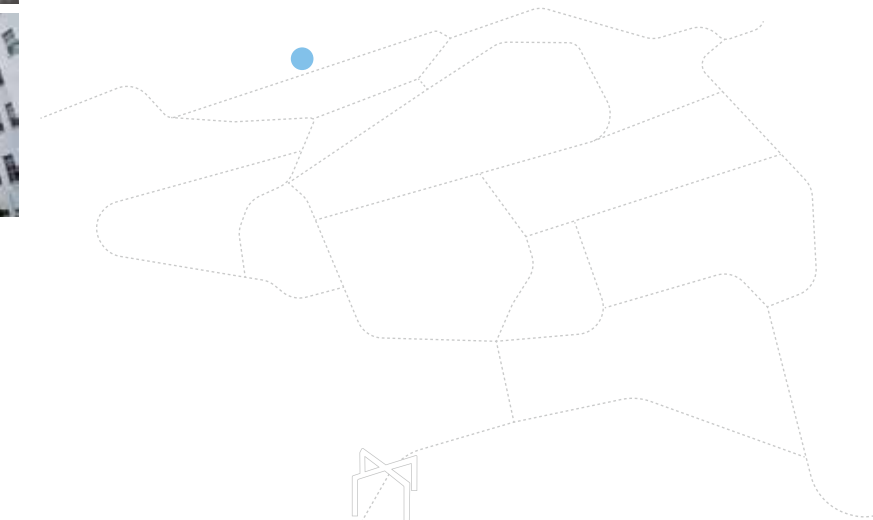
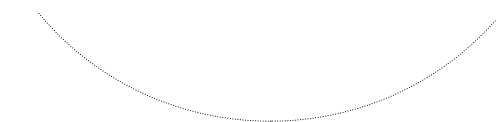


PURPOSE

To reinforce the ethics, aesthetic sensitivity, convergent and creative thinking skills, proficient communication skills, and linguistic skills which are all required in today's globalized society

TARGET

- To cultivate core capabilities through deep and wide general liberal arts education.
- To provide deep knowledge and balanced insight into various academic fields.
- To reinforce education programs to cultivate humanity to understand the regional community and multiculturalism.
- Foster fundamental capabilities of speaking, listening, reading, and writing.



2019

CHOSUN UNIVERSITY
BROCHURE



COLLEGE OF HEALTH SCIENCES

RELATED DIVISIONS AND DEPARTMENTS

Department of Counseling & Psychology

<http://www.chosun.ac.kr/psychology/>

Department of Speech Therapy

<http://www.chosun.ac.kr/slp/>

Department of Operation Treatment

<http://www.chosun.ac.kr/ot/>



GREAT CHOSUN HUMAN UNIVERSITY

GREAT NURTURE

66
/
67

CULTIVATE ADVANCED HEALTH SCIENCE

The College of Health Sciences aims at developing specialized health and medical personnel for various fields of rehabilitation therapy, such as mental health, physical rehabilitation and special education services. Its' curriculum is based on the integrated education and research paradigm of specialized knowledge, research capabilities and international competence. The college recruits talented faculty and students, and has built an alumni support system. At the same time, it is developing English lectures to prepare students for the ever increasing globalization of our era, and is participating in large-scale national health and medical projects. Students are given both theoretical and practical education through academic-integrated education, regionally specialized education, and global competence education. In addition, they receive field practice at Chosun University Hospital to develop their skills and capabilities as health and medical specialists.

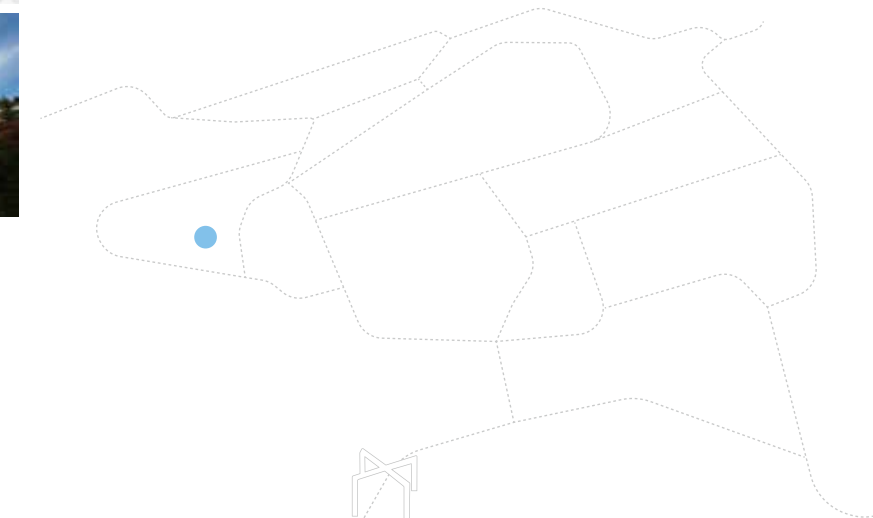


PURPOSE

To foster medical personnel in health sciences who contribute to the health of the nation and mankind through in-depth academic research, education and voluntary work based on the foundational philosophy of the university.

TARGET

- To foster original, creative medical talents in health science.
- To foster medical talents in health science with global perspectives.
- To foster medical talents in health science with a strong voluntary spirit.
- To foster skilled technological talents in the information era.



2019

CHOSUN UNIVERSITY
BROCHURE



College of Future Society Convergence

RELATED DIVISIONS AND DEPARTMENTS

Division of Human Convergence Services

<http://future.chosun.ac.kr/human/>

Division of Advanced Industry Convergence

<http://future.chosun.ac.kr/ict/>



GREAT CHOSUN HUMAN UNIVERSITY

GREAT NURTURE

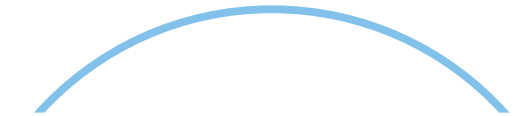
68
/
69

DESIGNING A NEW FUTURE WITH WORKING AND STUDYING

College of Future Society Convergence, which was established in 2017, is the 17th college of the Chosun University, is an open university for adult learners who can learn university regular curriculum for those who graduated from specialized vocational high schools and Meister High School, employed people who graduated from a vocational class at a regular high school, and those who graduated from high school over the age of 30.

College of Future Society Convergence operates a learner-oriented curriculum that combines work and learning, develops a variety of educational contents based on online-to-offline learning, and provides lifelong learning convenience through weekdays(night time learning) and weekend learning.

In addition, College of Future Society Convergence has been selected as managing school of lifelong education support project for two years in a row by the Ministry of Education in 2017 and 2018 to provide opportunities for higher education and a lifelong social-tailored education to adult learners and post-employment learners.

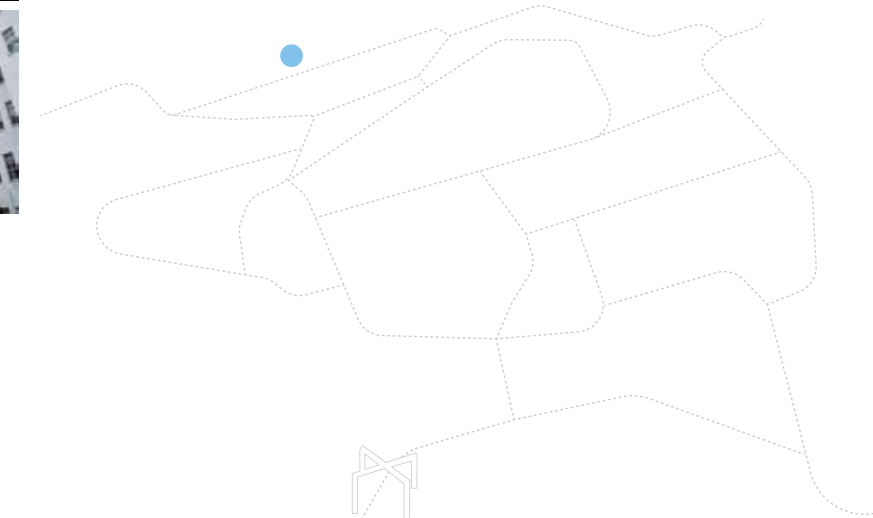


PURPOSE

In an ever-changing society, College of Future Society Convergence is a place where anyone can be educated by cultivating the ability to lead and share the changing times.

TARGET

- Research on convergence services that can lead the changing times and nurture social-specific people who need converged practice education in the industrial field.
- To foster convergence technicians who accord with the times of convergence and consilience, the college fosters talented people who have creative problem solving ability by convergence and consensus among academic fields.



2019

CHOSUN UNIVERSITY
BROCHURE



GRADUATE SCHOOLS

MASTER'S PROGRAM

- Humanities and Social Science Courses
- Natural Science Courses
- Engineering Courses
- Arts and Sports Courses
- Medical Science Courses
- Co-operative Courses Across Departments
- Industry-University-Research Co-operative Courses

DOCTORAL PROGRAMS

- Humanities and Social Science Courses
- Natural Science Courses
- Engineering Courses
- Arts and Sports Courses
- Medical Science Courses
- Co-operative Courses Across Departments
- Industry-University-Research Co-operative Courses



GREAT CHOSUN HUMAN UNIVERSITY

GREAT NURTURE

70
/
71

SPECIAL GRADUATE SCHOOLS

Graduate School of Education <http://www.chosun.ac.kr/edu/>

The Graduate School of Education was established to develop specialists in education. It provides the best educational services including specialized curriculums to foster professionalism of teachers; educational systems for the global, information-oriented society; building of human and financial infrastructure; education systems for local community service; and support systems to develop faculty specialties, high-tech education facilities, and educational welfare services.

Graduate School of Policy <http://www.chosun.ac.kr/gsp/>

The Graduate School of Policy aims at developing talents who will contribute to the local community and the nation when working in the local selfgovernment era of the 21st century. In order to recruit and foster leaders for public policy, various departments and curriculums have been established, such as the Department of Public Administration, Military Science, Social Welfare, Addiction Rehabilitation Welfare, and Leadership courses.

Graduate School of Industrial Technology Convergence <http://www.chosun.ac.kr/gi/>

By organically harmonizing education and onsite technology, the Graduate School of Industrial Technology Convergence educates students to understand and respond to the issues of modern industrial society. Based on engineering knowledge, graduates study and research the theories and practices of specialized technology and management. Through industryuniversity co-operation, it aims at fostering distinguished technicians and businessmen who will resolve technical and social problems.

Graduate School of Design <http://www.chosun.ac.kr/gsd/>

The Graduate School of Design aims at developing designers and art therapy specialists who will contribute to commercial and cultural arts based on modern design philosophies. This endeavor has been intently developed as a core area of the 21st century knowledge-based society through industrial design specialization projects, the New University for Regional Innovation project, the Formative Arts Research Center, the Design Venture Project, and connections with student clubs.

Graduate School of Health Science <http://www.chosun.ac.kr/ehs14/>

The Graduate School of Health Science aims at nurturing leaders possessing the necessary creative skills that can enhance individual health and welfare while improving national health. Furthermore, it is focused on developing experts who will contribute to the local community, national health and general welfare of the people.

Graduate School of Clinical Pharmacy <http://www.chosun.ac.kr/clinicalpharm/>

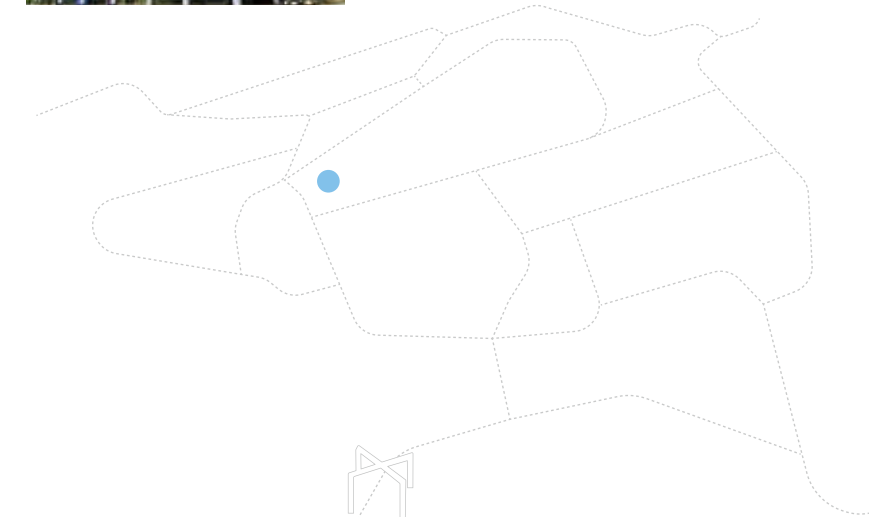
The Graduate School of Clinical Pharmacy aims at developing patientoriented pharmacists and clinical pharmacy experts with integrated knowledge of medicine and pharmacy. It aims at leading the advancement of pharmaceutical care through building the knowledge, research and practical skills required for the promotion of rational pharmacology in the rapidly changing medical industry.

Graduate School of Business Administration [tp://www.chosun.ac.kr/gsba/](http://www.chosun.ac.kr/gsba/)

Modern society requires segmented knowledge and in-depth capabilities. The Graduate School of Business Administration aims at nurturing business leaders who creatively and actively respond to the rapidly changing business environment by imparting them with both a sound theoretical foundation and practical skills.

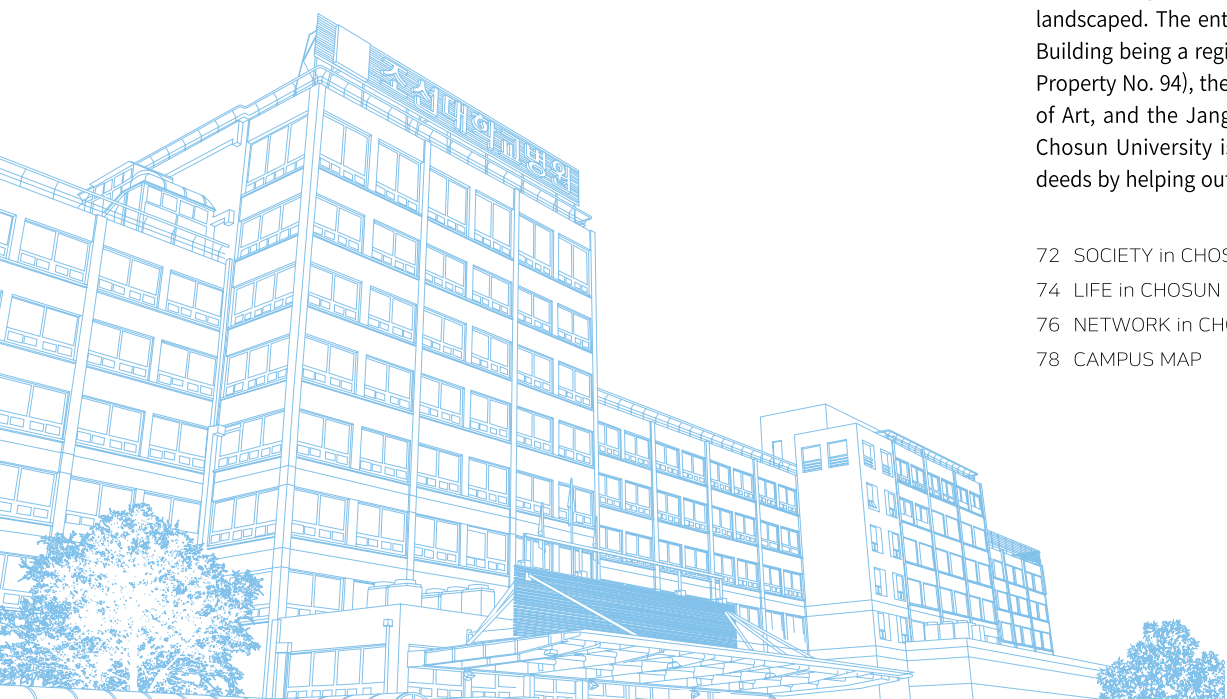
OPEN A NEW FUTURE WITH IN-DEPTH KNOWLEDGE

If the purpose of Graduate Schools in the past were pure academic research, Graduate Schools in the 21st century are required to foster original and creative specialized talents through converged studies. Chosun University Graduate Schools are taking drastic changes in educational directions to develop specialists with practical knowledge. The college's student-centric administration services, expansion of incentives for academic activities, development, and expansion of scholarship programs such as the research grants, and expansion of support for overseas training show its efforts to develop specialized talent.



GREAT FACILITIES

A beautiful campus for the regional community, a warm university that contributes to the nation and mankind



Chosun University is located in a valley of the Moodeungs mountains along the Baekdudaegan mountain range, and this eco-friendly campus is beautifully landscaped. The entire campus is a wonderful cultural complex with the Main Building being a registered historical landmark of Gwangju (Registered Cultural Property No. 94), the expansive rose garden, Kim Bo-Hyun-Sylvia Wald Museum of Art, and the Jang Hwang Nam Information and Communication Museum. Chosun University is developing into a“HUMAN UNIVERSITY” pursuing good deeds by helping out neglected neighbors in the regional and global society.

- 72 SOCIETY in CHOSUN
- 74 LIFE in CHOSUN
- 76 NETWORK in CHOSUN
- 78 CAMPUS MAP

SOCIETY

A university that benefits society based on trust

LIFE

The best university environment that fosters the best talent

**HUMAN
UNIVERSITY**

NETWORK

A happy university that engenders harmony among members and regional society

SOCIETY in CHOSUN

Shared growth with the regional community based on trust and communication

Chosun University Hospital, a patient-centric, eco-friendly global hospital

Chosun University Hospital, opened on April 15, 1971, is a general hospital ranked as a "First Tier" hospital according to the Health Insurance Review & Assessment Service Ratings. It has 25 departments and 850 wards, and is renowned as a patient-centric, eco-friendly global hospital.

Foundation

15th April, 1971

Properties

General hospital / "First Tier" hospital according to Health Insurance Review & Assessment Ratings

Core Values

Reinforce specialties, eco-friendly treatment environment, research and education, community service

Scale

25 departments, 850 wards

The Chosun University Dental Hospital is a pleasant, patient-centered dental hospital

Founded in 1978, the Chosun University Dental Hospital was the first university dental hospital established in the Honam region and ever since it opened it has been playing a pivotal role in enhancing the oral health of the region through the free dental care that it provides. In 2014, the smart treatment year was opened through the advanced, patient-centered Integrated Medical Information System. It was the first local university dental hospital to be accredited by the Ministry of Health and Welfare.

Foundation

26th October, 1978

Properties

Medical Institute accredited by the Ministry of Health & Welfare

Core Values

Tradition and reputation, specialized treatment, optimized medical services, humanitarian treatment philosophy, local community trust, health-oriented preventative care organizational culture

Advanced Equipment

Dental CT, early detection equipment for oral cancer, microtubule scope, 3-dimensional virtual surgery program

LIFE in CHOSUN

Enhanced quality of university life through human-centric environments

Global House·1

Global House is a "lifestyle hall" built to develop global talents with creative, international perspectives. It has the most advanced facilities for English education, and is operating various programs.

Baekhakhaksa·2

Baekhakhaksa is a nine-storey eco-friendly dormitory with two basement floors. It can accommodate 1,026 male and female students. The building uses clean renewable energy, and also offers meeting and study places with a quiet, pleasant clean environment.

Green Village·3

Green Village, with space for up to 170 residents, is exclusive for international faculty and students. Each room has conveniences such as air conditioners, internet access, and the electrical system is supplemented by an eco-friendly solar energy system.



Kim Bo Hyun and Sylvia Wald Museum of Art·4

This captivating attraction is located at the center of the first floor of the Main Building, which itself is a registered cultural landmark of Gwangju. The renowned artist Kim Bo Hyun, who was the first dean of the Department of the Arts, together with Ms. Sylvia Wald donated 400 pieces of permanent art for this museum while a variety of special exhibitions and educational programs are offered to provide cultural experiences to the general public.

Jang Hwang Nam Information and Communication Museum·5

Dr. Jang Hwang Nam, a Korean resident in the United States, donated 4,500 information and communication devices for the founding of this museum. You can see the 170-years history of information and communications at a glance, with these materials of high historic value.

Museum·6

The Museum has conducted a series of extensive excavations since its founding in 1992 revealing that the history of Honam started over 100,000 years ago. In 2015, it moved to the second floor of Seoseok Hall. It has three permanent exhibitions, which are the 'Honam Prehistoric Culture Exhibition' that showcases relics from prehistoric times, the 'Scholar (Seonbi) Culture Exhibition' that showcases the lifestyles of Korean scholars of past eras, and the 'Kim Hyun Seung Literature Exhibition' that showcases the life and works of poet Kim Hyun Seung.

University Library·7

The University Library was newly built in 2003 and holds 1.3 million books. It is an advanced facility with 12 archives, multimedia information centers, and community zones. The library has operated a first-of-its-kind-in-Korea reading and debating club, making it a premium place for reading and learning.



2019

CHOSUN UNIVERSITY
BROCHURE

NETWORK in CHOSUN

We create a world of public welfare through warm humanism



Bitgoeul Boeun Festival

The Daedong Festival was renamed as the Bitgoeul Boeun Festival in 2013. It is the representative local festival of the Gwangju region to honor the citizens who contributed to the university's foundation.



Rose Festival

This garden is the landmark and pride of the Honam region with its 230 species and 17,994 roses blooming in the 8,299m² space. The Rose Festival has taken place every year since 2003 attracting horticulturists, lovers and families from across the nation to visit and enjoy.

GREAT CHOSUN HUMAN UNIVERSITY

GREAT FACILITIES

78
/
79



Volunteer groups of associate universities

Four universities in the Yeongnam and Honam regions (Chosun University, Dong-A University, Yeungnam University and Wonkwang University) have come together to offer various volunteer services to the local community and those in need.



One Person, One Volunteer Activity

Chosun University, aiming for shared growth with the local community, follows the motto of "one person with one volunteer activity" for all members of the university, and operates a locally connected cultural talent development program.



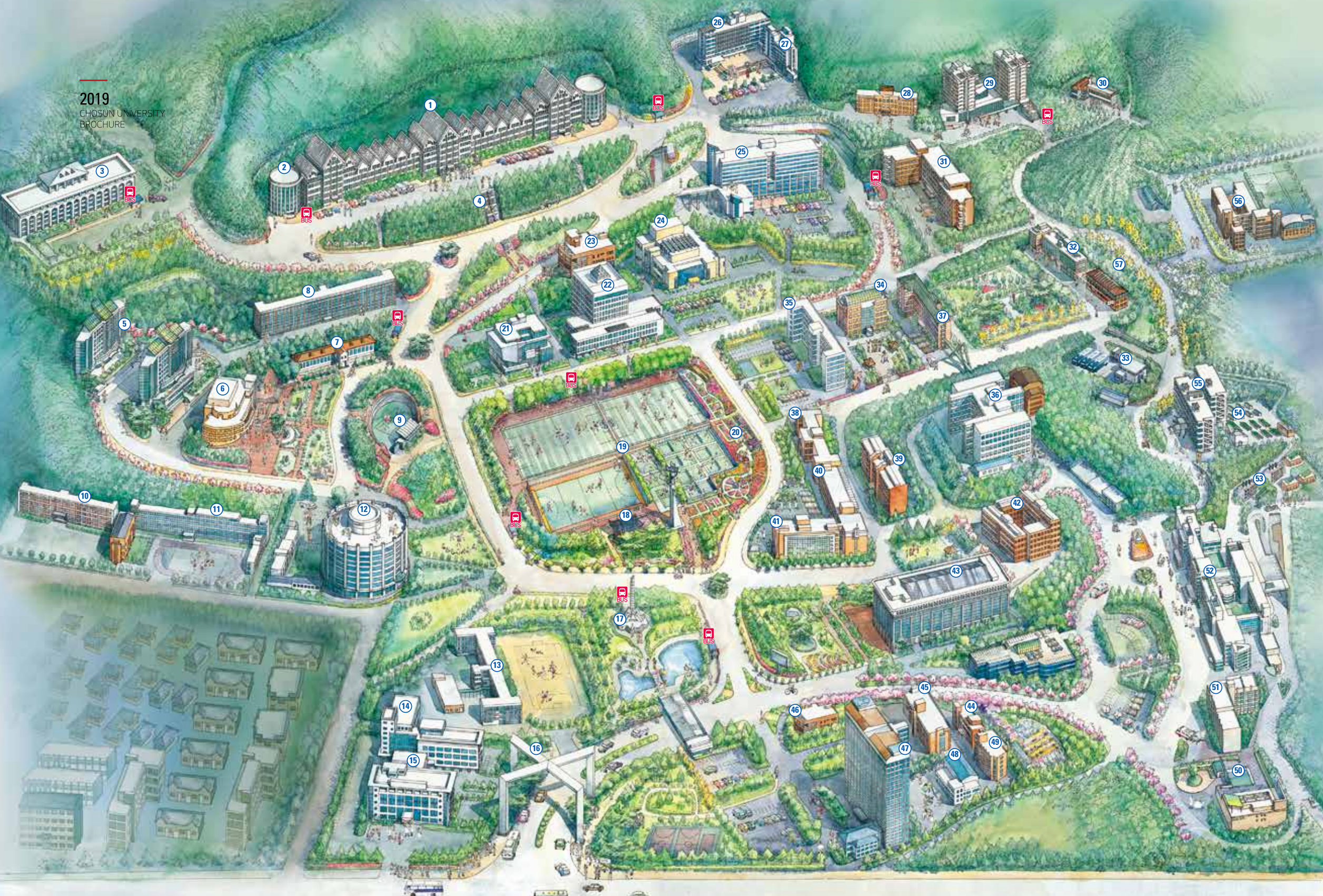
Volunteer Medical Team of Chosun University Hospital and Dental Hospital

The Volunteer Medical Team of Chosun University Hospital and Dental Hospital provides free medical treatments, therapies, and surgeries to the medically disadvantaged both at home and abroad.



1+1 Tutoring Program

This is a popular program that connects Korean students with foreign exchange students to help each other develop global perspectives and competencies. Mutual language studies help foreign exchange students to adapt to the environment, and promote Chosun University's various international cooperation policies to invite even more foreign students.



CAMPUS
MAP

- | | | | |
|----|--|----|--|
| 1 | Main Bldg.
University Headquarters, College of Humanities, College of Foreign Studies, College of Future Society Convergence, Kim Bo-Hyun & Sylvia Wald Museum of Art | 28 | Hwanggeumchugwan State-Run Exam Preparation Bldg. |
| 2 | Faculty Bldg. | 29 | Global House Dormitory 2 |
| 3 | College of Social Sciences / College of Education
College of Social Sciences, College of Education, Graduate School of Education, Teachers' Training Center | 30 | Reserve Officers Training Corps |
| 4 | 108 Stairway | 31 | College of Engineering Bldg. 2 |
| 5 | Baekhakhaksa Dormitory 1 | 32 | College of Aerospace / Naval Architecture Engineering Bldg. |
| 6 | Seoseok Hall Museum, Lifelong Education Center, College of Health Science | 33 | Transportation Division |
| 7 | Jang Hwang Nam Information and Communication Museum | 34 | Chosun College of Science & Technology Administration Bldg. |
| 8 | Student Union
Student Affairs Office, Student Council, Club Association, Newspaper and Broadcasting, Military Affairs Administration Office | 35 | Chosun College of Science & Technology Bldg. 1 |
| 9 | 1.8 Theater Outdoor Stage | 36 | Chosun College of Science & Technology Bldg. 2 |
| 10 | Chosun University Girls' High School | 37 | Chosun College of Science & Technology Bldg. 3 |
| 11 | Chosun University Girls' Middle School | 38 | College of Medicine / Medical School Bldg. 1 |
| 12 | College of Art & Design
College of Art & Design, Graduate School of Design, Museum of Art | 39 | College of Medicine / Medical School Bldg. 2 |
| 13 | Chosun University Boys' Middle School | 40 | College of Medicine / Medical School Bldg. 3
Memorial Hall for the 50th Anniversary of College of Medicine |
| 14 | College of Dentistry / Graduate School of Dentistry | 41 | Genetic Engineering Bldg.
DNA Repair Research Center, Marine Bio Research & Education Center, Kimchi Research Center, Research Center for National Dementia |
| 15 | Chosun University Dental Hospital | 42 | Natural Sciences Bldg. College of Natural Sciences, Division of Science Education |
| 16 | Main Entrance Arch | 43 | Gymnasium
College of Physical Education, Graduate School of Industrial Technology Convergence, Graduate School of Public Health, Division of Military Science |
| 17 | Foundation Monument | 44 | College of Pharmacy Bldg. 1 |
| 18 | Seorimjeong | 45 | College of Pharmacy Bldg. 2 |
| 19 | University Stadium | 46 | College of Pharmacy Bldg. 3 |
| 20 | Rose Garden | 47 | College of Engineering Bldg. 1 산업기술융합대학원, 임석홀 |
| 21 | International Center
Information & Computer Center, Language Education Center, Healthcare Center, Employment Support | 48 | Production Education Laboratory Bldg. |
| 22 | University Library | 49 | Business Incubation Center |
| 23 | Solmaru Cafeteria and Consumers' Cooperatives | 50 | Chosun University Hospital Funeral Hall |
| 24 | Haoreumgwan Main Stage, Admission Office, Graduate School | 51 | Ouiseunggwan Clinical Instructor Laboratory |
| 25 | College of Electronics & Information Engineering | 52 | Chosun University Hospital |
| 26 | College of Business
Graduate School of Business Administration, Graduate School of Policy | 53 | Green Village International Professor and Student Dormitory, Training Camp |
| 27 | College of Law | 54 | Solar Energy Research Complex |
| | | 55 | College of Nursing |
| | | 56 | Chosun University Boys' High School |
| | | 57 | Chosun University Kindergarten |